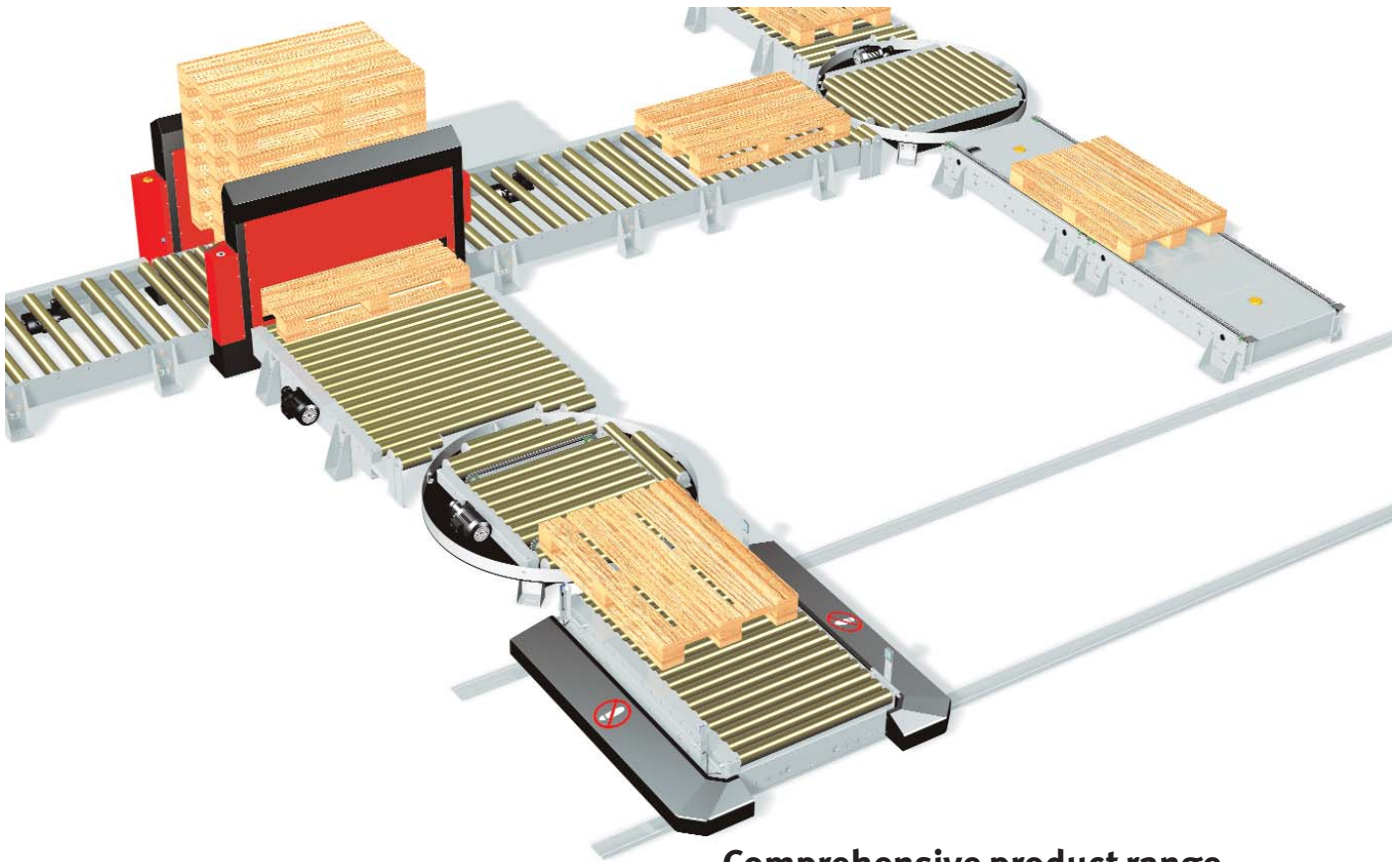


# PALLET HANDLING

- ROLLER CONVEYORS
- CHAIN CONVEYORS
- ROTARY TABLES
- TRANSFER UNITS
- TRANSFER TROLLEYS
- PALLET MAGAZINES
- ACCESSORIES
- CONTROL SYSTEMS



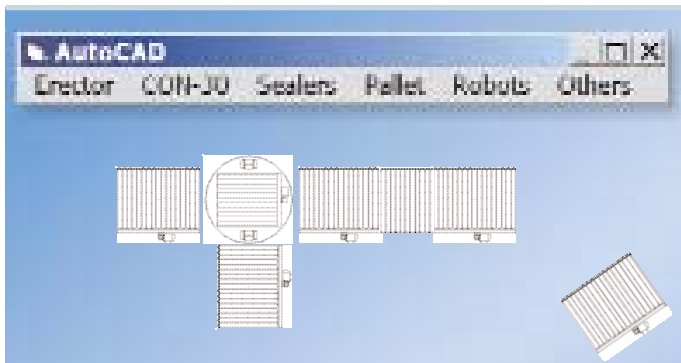
# We move your pallets



## Comprehensive product range

SOCO SYSTEM's pallet handling programme is very extensive. Comprising a multitude of standard components, the system can be combined into an infinite number of functional modules that can be combined endlessly.

The system is easy to install, re-locate, adapt, maintain, and extend.



## Design your own plant layout with SOCO SYSTEM Manager

Design your own packaging station, packing and conveying line on your own computer using the complete range of SOCO SYSTEM modules. All modules are available in a variety of widths and lengths.

The SOCO SYSTEM Manager is a supplementary programme to AutoCAD and AutoCAD LT. Once installed, the SOCO SYSTEM Manager is part of the menu for both programmes.



## Service and spare parts

SOCO SYSTEM's products are highly reliable and require only minimum maintenance.

All standard equipment is supplied with a spare parts manual. This manual makes ordering of spare parts quick and simple. Spare parts are available from stock and can be supplied with short notice.

A team of highly motivated and efficient SOCO SYSTEM employees are available for your service and assistance.

# How to choose the right equipment

## Which pallet types do you use?

Pallet size, configuration, construction, and weight decide the conveyor type.

### Standard EUR pallets 800 mm x 1200 mm,

### 1000 mm x 1200 mm and 1200 mm x 1200 mm

can be moved **longways** i.e. with the 800 mm, 1000 mm or 1200 mm side leading – on standard pallet roller conveyors with roller pitch 178 mm.

can be moved **crossways** i.e. with the 1200 mm side leading – on pallet roller conveyors with narrow roller pitch, i.e. pitch 89 mm.

### 400 mm x 600 mm pallets – so-called 1/4 pallets,

### and 600 mm x 800 mm pallets – so-called 1/2 pallets

can usually be moved on pallet conveyors with narrow roller pitch 89 mm, however there are bottom configurations that do not allow this – please consult SOCO SYSTEM for advice and further details.

### 48" x 42" and 48" x 48" – GMA type pallets

can, in most cases, be moved with 48" side leading on conveyors with roller pitch 178 mm and with either side leading on conveyors with narrow roller pitch, i.e. 89 mm.

### Full base pallets

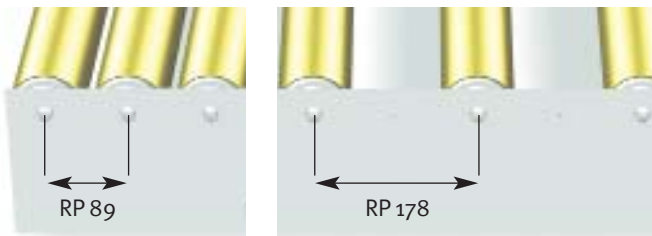
i.e. pallets with bottom boards in all 4 directions can easily be moved with either side leading on conveyors with roller pitch 178 mm.



## Chain or roller conveyor?

Chain conveyors are used where the bottom configuration of the pallets does not allow it to be moved on pallet roller conveyors.

Chain conveyors are often more suitable for 1/4 pallets.



## Which roller pitch to use?

Roller pitch – RP – is the distance between the roller centres.

RP 178 mm with roller diameter 80 mm is the most economical in terms of conveyor price, however, in most cases, this requires fencing to meet industry requirements and regulations for personnel safety and security.

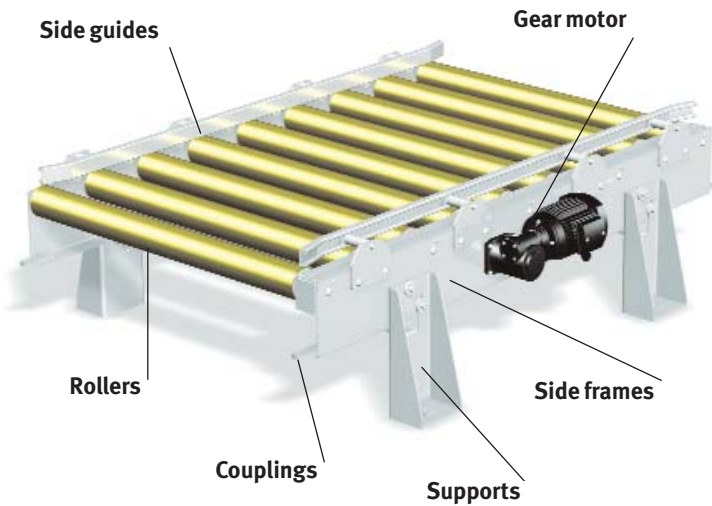
RP 89 mm does not require fencing, and most pallet configurations can be conveyed with either side leading.



## Driven or non driven?

SOCO SYSTEM does not recommend handling of loaded pallets on non-driven conveyors. The reason is that loads can easily become dislocated on the pallets, products can slide and fall off the pallets, causing product damage and personnel hazards.

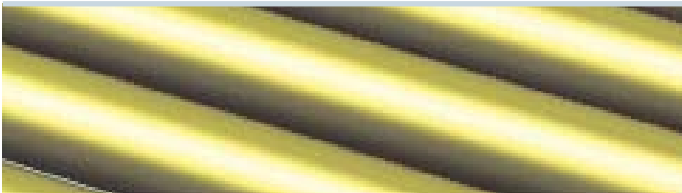
# The pallet handling system



## A world of possibilities

Imagination is the only limitation to the number of possible applications of the pallet handling system.

To give an idea of the construction principles and the possibilities, the various components of a driven roller pallet conveyor are explained.



### Rollers

SOCO SYSTEM's rollers and chains have excellent wear and tear properties, and they are smooth-running components made from the best raw materials. Standard diameter is  $\varnothing$  80 mm.



### Side guides

Side guides are available for mounting in different heights. The side guides aid the pallets to maintain the correct direction.



### Side frames

The frames form the main structure of the conveyor and are designed for both function and harmony.

Frames come in different heights: 90 mm for mounting direct on the floor and 190 mm for additional heights.



### Gear motor

The sturdy and reliable standard gear motor is a 0.37 kW motor with a speed of 11.4 m/min. Other speeds are available on request.

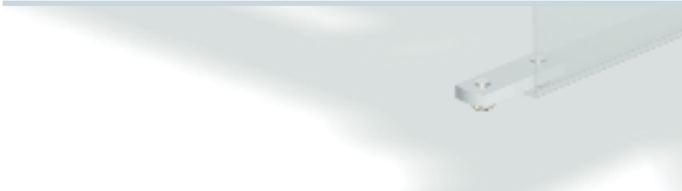
The hollow shaft worm reduction gear is bolted to the conveyor frame.



### Supports

Are available for inside or outside mounting, for stationary attachment to floor, or to stand direct on the floor.

Supports are available in various heights.



### Couplings

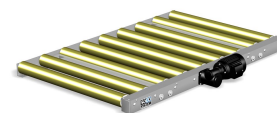
A variety of standard fittings makes it easy to connect the modules.

All couplings are easily and quickly mounted.

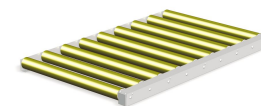
## Pallet handling

### Pallet roller conveyors height 90

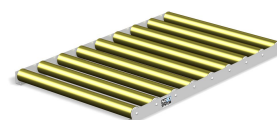
Driven pallet roller conveyors  
For floor mounting. Page 1



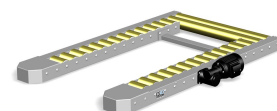
Coupled sections for driven pallet conveyors  
For floor mounting. Page 2



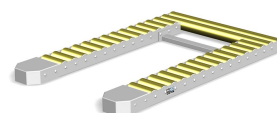
Non-driven pallet roller conveyors  
For floor mounting. Page 3



Driven 2-part pallet roller conveyors  
For coupling of driven conveyors. Page 4

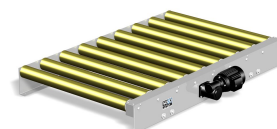


Non-driven 2-part pallet roller conveyors Page 5

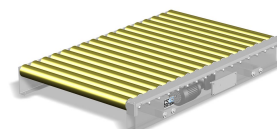


### Pallet roller conveyors height 190

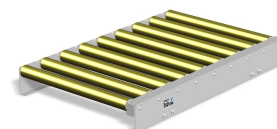
Driven pallet roller conveyors with-  
sidemounted gear motor  
For support or floor mounting. Page 6



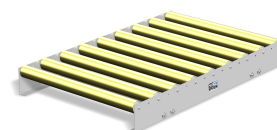
Driven pallet roller conveyors with sub-  
mounted gear motor Page 8



Coupled sections for driven pallet roller  
conveyors  
For support or floor mounting. Page 9



Non-driven pallet roller conveyors  
For support or floor mounting. Page 11




### Accessories for pallet roller conveyors

Supports for external mounting Page 12



Supports for internal mounting Page 13

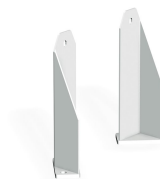


Cross bars for supports	Page 13	
Side guides - guide rail support To guide pallets.	Page 14	
Centre guides - holder For empty pallets of different sizes.	Page 15	
C-profile for side- and centre guides	Page 16	
Pallet end stop Prevents pallets from over-running the edge of the end of the conveyor.	Page 16	
Guide wheel Available for RP 178 only.	Page 17	
Pneumatic pallet stop	Page 18	
Brake roller	Page 19	
Photocell fixtures	Page 20	
Fork-lift guard Prevents fork-lift damage to conveyor.	Page 21	

Fork-lift stop Page 22



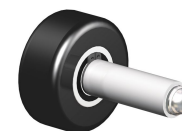
Support rollers - supports Page 23



Support rollers - roller for non-driven side Page 24

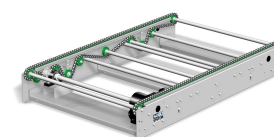


Support rollers - roller for driven side Page 25

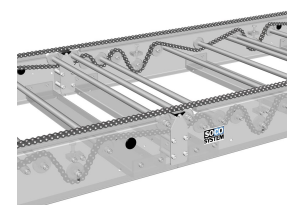


## Chain conveyors

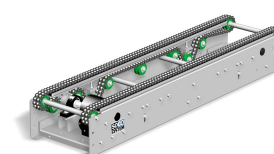
Chain conveyors - simplex chain Page 26



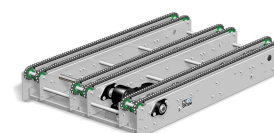
Coupled sections - simplex chain Page 27



Driven chain conveyors - duplex chain Page 28



Double-driven chain conveyors - simplex chain Page 29



## Accessories for chain conveyors





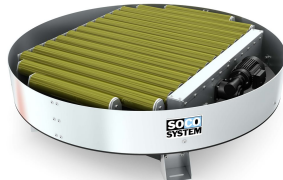
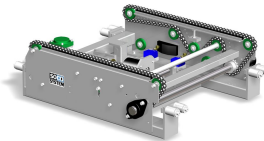
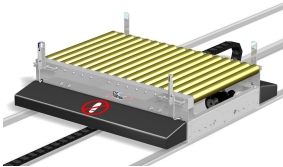



### Various accessories

Supports for external mounting Page 30



Supports for internal mounting	Page 31	
Side-guides	Page 32	
Pallet end stop	Page 33	
Capacitive sensors For signalling changes to control system.	Page 34	
Fork-lift stop Prevents fork-lift damage to conveyor.	Page 35	
Pneumatic pallet stop	Page 36	
Pneumatic pallet stop for 1/4 pallets For 1/4 pallets.	Page 37	
Supporting block - between conveyors	Page 38	
Supporting block - conveyor end	Page 39	



<b>Top cover plates</b>			
	Top cover plates for motor end - simplex	Page 39	
	Top cover plates for motor end - duplex	Page 40	
	Other top cover plates	Page 41	
	End cover plates	Page 42	
<b>Pallet rotary tables</b>	Rotary tables	Page 43	
<b>Pallet transfer units</b>	Transfer units	Page 44	
<b>Pallet transfer trolleys</b>	Transfer trolleys Suitable for transport of pallets between two or more conveyor lines.	Page 45	
<b>Pallet exchangers</b>	Pallet exchangers The pallet exchanger consists of 2 side modules bolted to the floor.	Page 47	
<b>Accessories for pallet exchangers</b>	Rear plate for pallet changer with photocell Is used when the pallet changer forms part of an automatic system. Gives a signal when a pallet is missing.	Page 48	
<b>Pallet magazines</b>	Pallet magazine PalManager Fixed	Page 49	

Pallet magazine PalManager Multi  
Adjustable for different pallet widths.

Page 50



PalManager Multi Long pallet magazine  
This model is designed for 2000 mm pallets.

Page 52



PalManager GM5 pallet magazine  
1-5 pallets at a time.

Page 53



PalManager High pallet magazine  
Safe, easy, and noiseless.

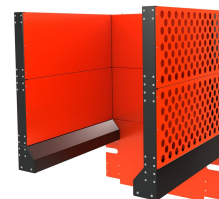
Page 54



## Accessories for pallet magazines

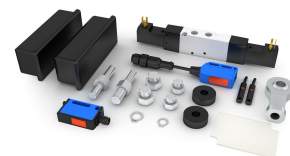
Tower module for PalManager  
The tower module is used as an extra extension  
on pallet magazines - available in 3 different  
widths.

Page 55



Spare parts kit for pallet magazines  
The spare parts kit contains the most vital wear-  
and-tear parts so as to avoid long production  
down-time.

Page 55



Alternative RAL colour for pallet  
magazines  
Standard pallet magazines are powder coated in  
RAL colours RAL 2002 and RAL 9005.

Page 55

The pallet magazines are available in other RAL  
colours at an additional cost.



Alarms for level of pallets  
Photocell kit for release of alarm when reaching  
the highest or lowest number of pallets in the  
pallet magazine.

Page 56

Alarm for minimum number of pallets is used  
when the pallet magazine forms part of an  
automatic system.



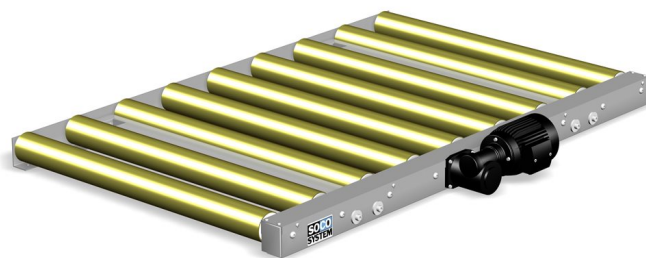
# Pallet roller conveyors height 90

## Driven pallet roller conveyors

For floor mounting.

The maximum length of a roller conveyor with one gear motor is 4.5 m with a maximum payload of 1500 kg.

All sections are supplied with coupling fittings.



### Specifications

Pallet handling	
Surface treatment	Electro galvanized steel with the exception of gear motor, chain, and roller axles. Rollers are electro galvanized with yellow chrome.
Frames	Cold-bend angle profiles bolted to C-profile cross bars with supports.
Rollers	Ø 80 mm electro galvanized steel tubes.
Axle diameter	Ø 17 mm.
Bearings	6203 - 2rs.
Roller fittings	Rollers are suspended between side frames by means of M10 axle.
Payload	For use up to 1,500 kg load per pallet and motor unit. Maximum suitable load is determined by several factors like speed of operation, width of conveyor, and shape and width of the pallets. If in doubt, please contact SOCO SYSTEM.
Standard height	The total height from floor to top of rollers is 90 mm.
Chain drive	Chains operate beneath roller surface. Chain drive is from roller to roller. ½" sprockets of hardened steel are integrated with the bearing of the roller.
Chain cover	Chains are protected by a U-profile mounted above the chains. The chain cover is beneath the roller level to ensure access to pallets from both sides of the conveyor.
Gear motor	0.37 kW. Worm reduction gear sidemounted on conveyor frame.
Speed	11.4 m/min (other speeds available).

Subject to alteration.

### Item no.

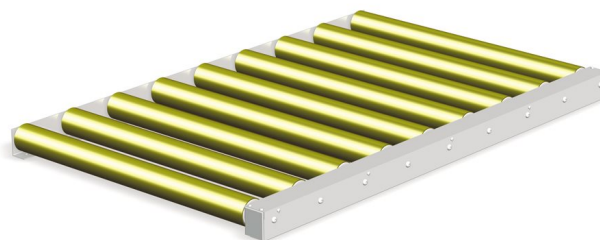
Width	Length	Rp 89* Item no.	Rp 178* Item no.
970	500	485911131	
	750	485911231	
	1000	480711131	480721131
	1500	480711231	480721231
	2000	480711331	480721331
1170	500	485912131	
	750	485912231	
	1000	480712131	480722131
	1500	480712231	480722231
	2000	480712331	480722331
1370	500	485913131	
	750	485913231	
	1000	480713131	480723131
	1500	480713231	480723231
	2000	480713331	480723331

\*Distance between the roller centres.n/a.: not available.All measurements are in mm. Subject to alteration.

# Pallet roller conveyors height 90

## Coupled sections for driven pallet conveyors

For floor mounting.



### Specifications

Pallet handling	
Surface treatment	Electro galvanized steel with the exception of chain and roller axles. Rollers are electro galvanized with yellow chrome.
Frames	Cold-bend angle profiles bolted to C-profile cross bars with supports.
Rollers	Ø 80 mm electro galvanized steel tubes.
Axle diameter	Ø 17 mm.
Bearings	6203 - 2rs.
Roller fittings	Rollers are suspended between side frames by means of M10 axle.
Payload	For use up to 1,500 kg load per pallet and motor unit. Maximum suitable load is determined by several factors like speed of operation, width of conveyor, and shape and width of the pallets. If in doubt, please contact SOCO SYSTEM.
Standard height	The total height from floor to top of rollers is 90 mm.
Chain drive	Chains operate beneath roller surface. Chain drive is from roller to roller. ½" sprockets of hardened steel are integrated with the bearing of the roller.
Chain cover	Chains are protected by a U-profile mounted above the chains. The chain cover is beneath the roller level to ensure access to pallets from both sides of the conveyor.

Subject to alteration.

### Item no.

Width	Length	Rp 89* Item No.	Rp 178* Item No.
970	250	485911030	
	500	485911130	
	750	485911230	
	1000	480711130	480721130
	1500	480711230	480721230
	2000	480711330	480721330
1170	250	485912030	
	500	485912130	
	750	485912230	
	1000	480712130	480722130
	1500	480712230	480722230
	2000	480712330	480722330
1370	250	485913030	
	500	485913130	
	750	485913230	
	1000	480713130	480723130
	1500	480713230	480723230
	2000	480713330	480723330

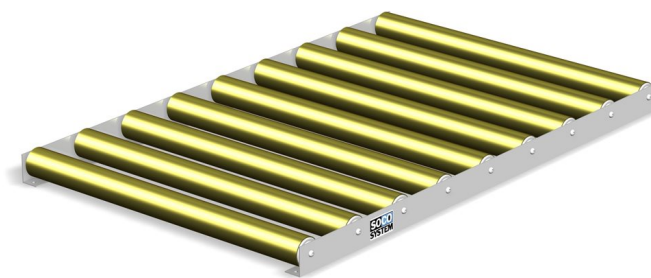
\*Distance between the roller centres.n/a.: not available.All measurements are in mm. Subject to alteration.

# Pallet roller conveyors height 90

## Non-driven pallet roller conveyors

For floor mounting.

Please note:  
NON driven pallet conveyors require appropriate fencing for personnel security.



### Specifications

Pallet handling	
Surface treatment	Electro galvanized steel with the exception of roller axles. Rollers are electro galvanized with yellow chrome.
Frames	Cold-bend angle profiles bolted to C-profile cross bars with supports.
Rollers	Ø 80 mm electro galvanized steel tubes.
Axle diameter	Ø 17 mm.
Bearings	6203 - 2rs.
Roller fittings	Rollers are suspended between side frames by means of M10 axle.
Payload	For use up to 1,500 kg load per pallet and motor unit. Maximum suitable load is determined by several factors like speed of operation, width of conveyor, and shape and width of the pallets. If in doubt, please contact SOCO SYSTEM.
Standard height	The total height from floor to top of rollers is 90 mm.
Subject to alteration.	

### Item no.

Width	Length	Rp 89* Item no.	Rp 178* Item no.
970	1000	480731131	480731132
	1500	480731231	480731232
	2000	480731331	480731332
1170	1000	480732131	480732132
	1500	480732231	480732232
	2000	480732331	480732332
1370	1000	480733131	480733132
	1500	480733231	480733232
	2000	480733331	480733332

\*Distance between the roller centres. All measurements are in mm. Subject to alteration.

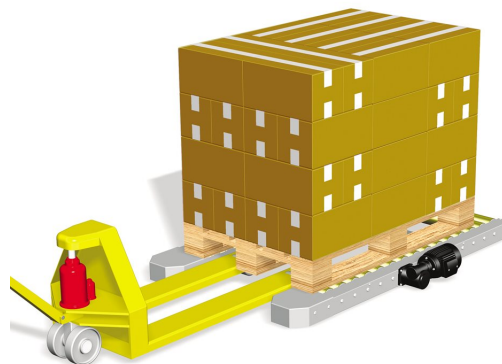
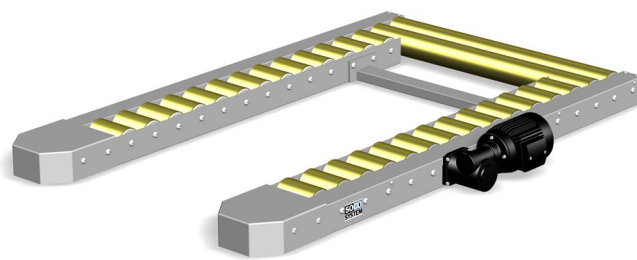
# Pallet roller conveyors height 90

## Driven 2-part pallet roller conveyors

For coupling of driven conveyors.

The 2-part roller conveyors make it possible to lead pallets from a roller conveyor in position for collection by hand lift truck.

Available with right or left side-mounted gear motor and with or without capacitive sensor at pick-up end.



### Specifications

Pallet handling	
Surface treatment	Electro galvanized steel with the exception of gear motor, chain, and roller axles. Rollers are electro galvanized with yellow chrome.
Frames	Cold-bend angle profiles bolted to C-profile cross bars with supports.
Rollers	Ø 80 mm electro galvanized steel tubes.
Axle diameter	Ø 17 mm.
Bearings	6203 - 2rs.
Roller fittings	Rollers suspended between side frames by means of M10 axle.
Payload	For use up to 1,500 kg load per pallet and motor unit. Maximum suitable load is determined by several factors like speed of operation, width of conveyor, and shape and width of the pallets. If in doubt, please contact SOCO SYSTEM.
Standard height	The total height from floor to top of rollers is 90 mm.
Chain drive	Chains operate beneath roller surface. Chain drive is from roller to roller. ½" sprockets of hardened steel are integrated with the bearing of the roller.
Chain cover	Chains are protected by a U-profile mounted above the chains. The chain cover is beneath the roller level to ensure access to pallets from both sides of the conveyor.
Gear motor	0.37 kW. Worm reduction gear sidemounted on conveyor frame.
Speed	11.4 m/min. (other speeds available).

Subject to alteration.

### Item no.

Width	Length	Rp 89* Item no.	Rp 178* Item no.
970	1500	480741611	480741621
1170	1500	480742611	480742621
1370	1500	480743611	480743621

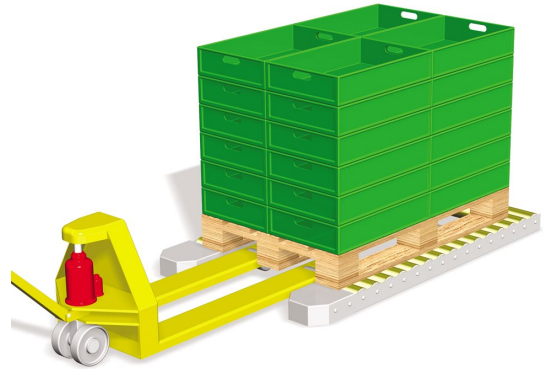
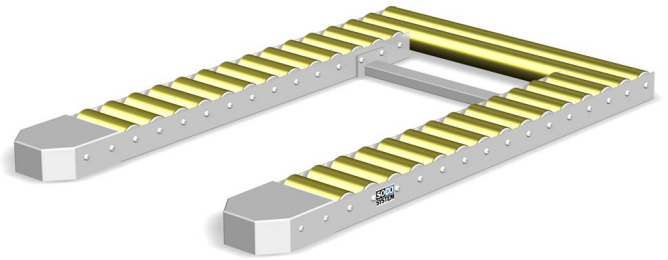
For left side mounted motor, change 7th digit from "6" to "7". \*Distance between the roller centres. All measurements are in mm. Subject to alteration.

# Pallet roller conveyors height 90

## Non-driven 2-part pallet roller conveyors

The 2-part roller conveyors make it possible to lead pallets from a roller conveyor in position for collection by hand lift truck.

Please note:  
NON driven pallet conveyors require appropriate fencing for personnel security.



### Specifications

Pallet handling	
Surface treatment	Electro galvanized steel with the exception of chain and roller axles. Rollers are electro galvanized with yellow chrome.
Frames	Cold-bend angle profiles bolted to C-profile cross bars with supports.
Rollers	Ø 80 mm electro galvanized steel tubes.
Axle diameter	Ø 17 mm.
Bearings	6203 - 2rs.
Roller fittings	Rollers are suspended between side frames by means of M10 axle.
Payload	For use up to 1,500 kg load per pallet and motor unit. Maximum suitable load is determined by several factors like speed of operation, width of conveyor, and shape and width of the pallets. If in doubt, please contact SOCO SYSTEM.
Standard height	The total height from floor to top of rollers is 90 mm.
Chain drive	Chains operate beneath roller surface. Chain drive is from roller to roller. ½" sprockets of hardened steel are integrated with the bearing of the roller.
Chain cover	Chains are protected by a U-profile mounted above the chains. The chain cover is beneath the roller level to ensure access to pallets from both sides of the conveyor.

Subject to alteration.

### Item no.

Width	Length	Rp 89* Item no.	Rp 178* Item no.
970	1500	480751210	480751220
1170	1500	480752210	480752220
1370	1500	480753210	480753220

\*Distance between the roller centres. All measurements are in mm. Subject to alteration.

# Pallet roller conveyors height 190

## Driven pallet roller conveyors with-sidemounted gear motor

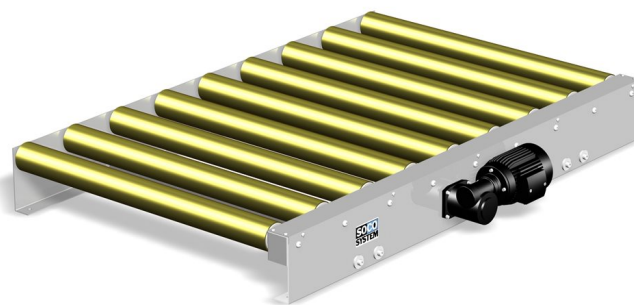
For support or floor mounting.

The maximum length of a roller conveyor with one gear motor is 4.5 m with a maximum payload of 1500 kg.

The conveyors can be mounted directly on the floor without supports.

All sections are supplied with coupling fittings.

- Silent - minimal friction.
- Smooth design - no sharp edges.
- Easy to relocate and extend.



### Specifications

Pallet handling	
Surface treatment	Electro galvanized steel with the exception of gear motor, chains, and roller axles. Rollers are electro galvanized with yellow chrome.
Frames	Cold-bend angle profiles bolted to C-profile cross bars with supports.
Rollers	Ø 80 mm electro galvanized steel tubes.
Axle diameter	Ø 17 mm.
Bearings	6203 - 2rs.
Roller fittings	Rollers are suspended between side frames by means of M10 axle.
Payload	For use up to 1,500 kg load per pallet and motor unit. Maximum suitable load is determined by several factors like speed of operation, width of conveyor, and shape and width of the pallets. If in doubt, please contact SOCO SYSTEM.
Standard height	The total height from floor to top of rollers is 190 mm.
Chain drive	Chains operate beneath roller surface. Chain drive is from roller to roller. 1/2" sprockets of hardened steel are integrated with the bearing of the roller.
Chain cover	Chains are protected by a U-profile mounted above the chains. The chain cover is beneath the roller level to ensure access to pallets from both sides of the conveyor.
Gear motor	0.37 kW. Hollow shaft worm reduction gear sidemounted on conveyor frame.
Speed	11.4 m/min (other speeds available).
Subject to alteration.	

### Item no.

Width	Length	Rp 89* Item no.	Rp 178* Item no.
970	500	485911141	
	750	485911241	
	1000	480711141	480721141
	1500	480711241	480721241
	2000	480711341	480721341
1170	500	485912141	
	750	485912241	
	1000	480712141	480722141
	1500	480712241	480722241
	2000	480712341	480722341
1370	500	485913141	
	750	485913241	
	1000	480713141	480723141
	1500	480713241	480723241
	2000	480713341	480723341

\*Distance between the roller centres.n/a.: not available.All measurements are in mm. Subject to alteration.



# Pallet roller conveyors height 190



## Accessories

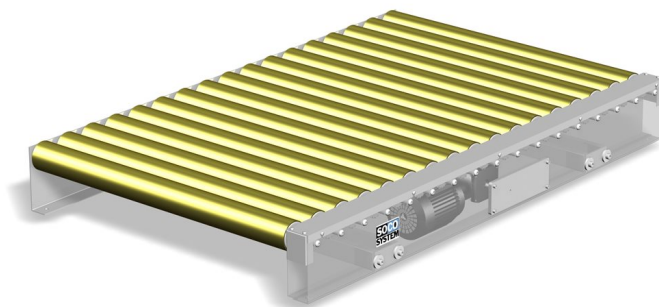
- ▶ Supports for external mounting
- ▶ Supports for internal mounting
- ▶ Cross bars for supports

Pallet conveyor system for handling of pallet containers with liquids at Coloplast in Denmark.

# Pallet roller conveyors height 190

## Driven pallet roller conveyors with sub-mounted gear motor

For support mounting only.



### Specifications

Pallet handling	
Surface treatment	Electro galvanized steel with the exception of gear motor, chain, and roller axles. Rollers are electro galvanized with yellow chrome.
Frames	Cold-bend angle profiles bolted to C-profile cross bars with supports.
Rollers	Ø 80 mm electro galvanized steel tubes.
Axle diameter	Ø 17 mm.
Bearings	6203 - 2rs.
Roller fittings	Rollers are suspended between side frames by means of M10 axle.
Payload	For use up to 1,500 kg load per pallet and motor unit. Maximum suitable load is determined by several factors like speed of operation, width of conveyor, and shape and width of the pallets. If in doubt, please contact SOCO SYSTEM.
Chain drive	Chains operate beneath roller surface. Chain drive is from roller to roller. 1/2" sprockets of hardened steel are integrated with the bearing of the roller.
Chain cover	Chains are protected by a U-profile mounted above the chains. The chain cover is beneath the roller level to ensure access to pallets from both sides of the conveyor.
Gear motor	0.37 kW. Hollow shaft worm reduction gear sidemounted on conveyor frame.
Speed	11.4 m/min (other speeds available).

Subject to alteration.

### Item no.

Minimum height 255 mm excl. supports.

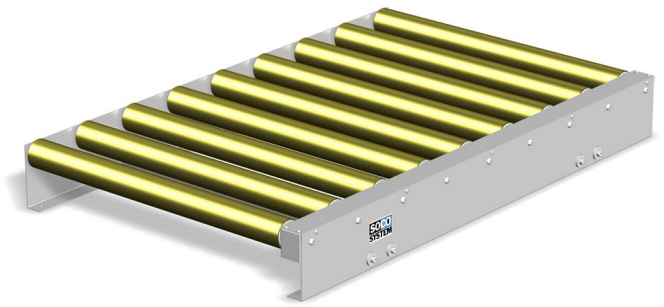
Width	Length	Rp 89* Item no.	Rp 178* Item no.
970	500	485911121	
	750	485911221	
	1000	480711121	480721121
	1500	480711221	480721221
	2000	480711321	480722321
1170	500	485912121	
	750	485912221	
	1000	480712121	480723121
	1500	480712221	480722221
	2000	480712321	480722321
1370	500	485913121	
	750	485913221	
	1000	480713121	480723121
	1500	480713221	480723221
	2000	480713321	480723321

\*Distance between the roller centres.n/a.: not available.All measurements are in mm. Subject to alteration.

# Pallet roller conveyors height 190

## Coupled sections for driven pallet roller conveyors

For support or floor mounting.



### Specifications

Pallet handling	
Surface treatment	Electro galvanized steel with the exception of gear motor, chains, and roller axles. Rollers are electro galvanized with yellow chrome.
Frames	Cold-bend angle profiles bolted to C-profile cross bars with supports.
Rollers	Ø 80 mm electro galvanized steel tubes.
Axle diameter	Ø 17 mm.
Bearings	6203 - 2rs.
Roller fittings	Rollers are suspended between side frames by means of M10 axle.
Payload	For use up to 1,500 kg load per pallet and motor unit. Maximum suitable load is determined by several factors like speed of operation, width of conveyor, and shape and width of the pallets. If in doubt, please contact SOCO SYSTEM.
Standard height	The total height from floor to top of rollers is 190 mm.
Chain drive	Chains operate beneath roller surface. Chain drive is from roller to roller. 1/2" sprockets of hardened steel are integrated with the bearing of the roller.
Chain cover	Chains are protected by a U-profile mounted above the chains. The chain cover is beneath the roller level to ensure access to pallets from both sides of the conveyor.

Subject to alteration.

### Item no.

Width	Length	Rp 89* Item no.	Rp 178* Item no.
970	250	485911020	
	500	485911120	
	750	485911220	
	1000	480711120	480721120
	1500	480711220	480721220
	2000	480711320	480721320
1170	250	485912020	
	500	485912120	
	750	485912220	
	1000	480712120	480722120
	1500	480712220	480722220
	2000	480712320	480722320
1370	250	485913020	
	500	485913120	
	750	485913220	
	1000	480713120	480723120
	1500	480713220	480723220
	2000	480713320	480723320

\*Distance between the roller centres.n/a.: not available.All measurements are in mm. Subject to alteration.

# Pallet roller conveyors height 190



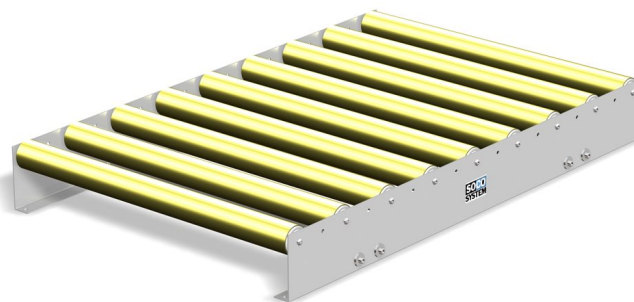
Pallet conveyor system at Dansk Kaffe Kompagni in Denmark.

# Pallet roller conveyors height 190

## Non-driven pallet roller conveyors

For support or floor mounting.

Please note:  
NON driven pallet conveyors require appropriate fencing for personnel security.



### Specifications

Pallet handling	
Surface treatment	Electro galvanized steel with the exception of gear motor, chains, and roller axles. Rollers are electro galvanized with yellow chrome.
Frames	Cold-bend angle profiles bolted to C-profile cross bars with supports.
Rollers	Ø 80 mm electro galvanized steel tubes.
Axle diameter	Ø 17 mm.
Bearings	6203 – 2rs.
Roller fittings	Rollers suspended between side frames by means of M10 axle.
Payload	For use up to 1,500 kg load per pallet and motor unit. Maximum suitable load is determined by several factors like speed of operation, width of conveyor, and shape and width of the pallets. If in doubt, please contact SOCO SYSTEM.
Standard height	The total height from floor to top of rollers is 190 mm.

Subject to alteration.

### Item no.

Width	Length	Rp 89* Item no.	Rp 178* Item no.
970	1000	480731121	480731122
	1500	480731221	480731222
	2000	480731321	480731322
1170	1000	480732121	480732122
	1500	480732221	480732222
	2000	480732321	480732322
1370	1000	480733121	480733122
	1500	480733221	480733222
	2000	480733321	480733322

\*Distance between the roller centres. All measurements are in mm. Subject to alteration.

### Accessories

- ▶ Supports for external mounting
- ▶ Supports for internal mounting
- ▶ Cross bars for supports

# Accessories for pallet roller conveyors

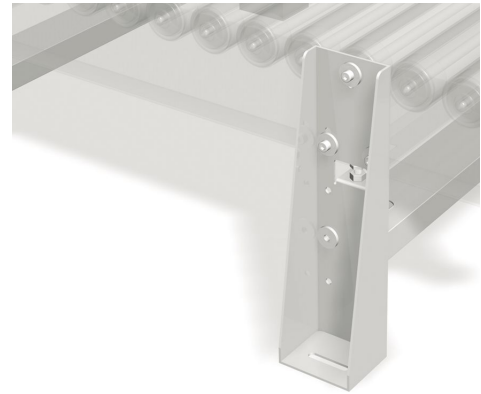
## Supports for external mounting

Supports for **external** mounting offer high durability and stability and are also recommended for heavy-duty purposes.

Different models make it possible to achieve the desired operational height.

Item no.	
Height	Item no.
250	442731250
350	442731350
500	442731500

Other heights available on request. All measurements in mm. Subject to alteration.



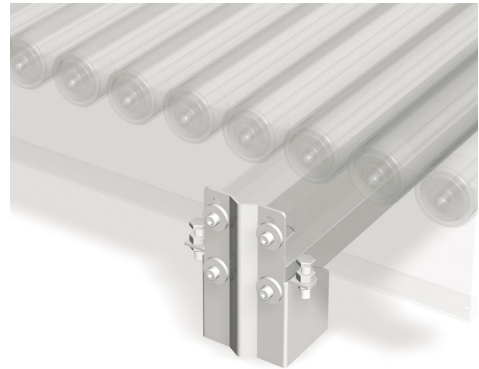
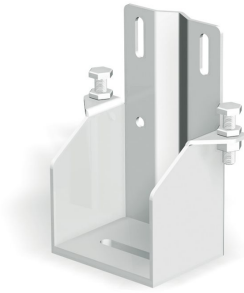
Driven pallet conveyor system at Coloplast in Denmark.

# Accessories for pallet roller conveyors

## Supports for internal mounting

Supports for **internal** mounting are recommended where space does not allow external mounting.

Supports for internal mounting are not recommended for heights exceeding 350 mm.

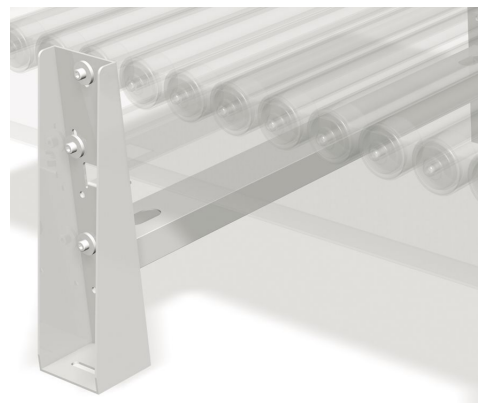
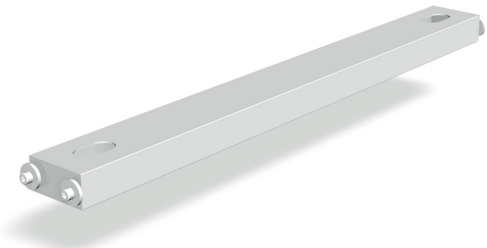


Item no.	
Height	Item no.
250	442732250
350	442732350
Other heights available on request. All measurements are in mm. Subject to alteration.	

## Cross bars for supports

Compulsory for heights exceeding 350 mm.

Item no.	
Use 1 unit for 2 supports.	
Width	Item no.
970	487750970
1170	487751170
1370	487751370
All measurements are in mm. Subject to alteration.	



# Accessories for pallet roller conveyors

## Side guides - guide rail support

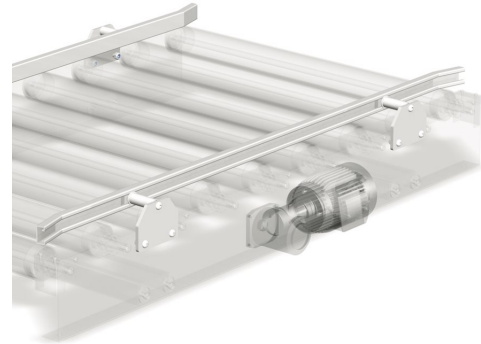
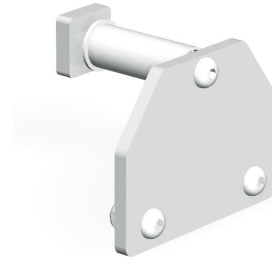
To guide pallets.

To order as complete side supports:

1. State the required number of guide rail support units.

2. State the required guide rail length in mm.

<b>Item no.</b>
One unit
<b>Item no.</b>
465141000
Subject to alteration.



### Accessories

- ▶ C-profile for side- and centre guides



# Accessories for pallet roller conveyors

## Centre guides - holder

For empty pallets of different sizes.

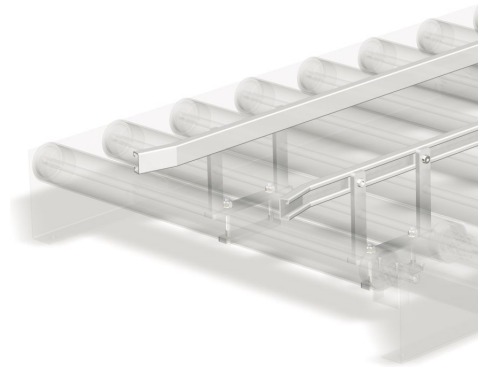
Recommended for guiding the centre part of the pallet during transportation.

Two guide rail supports are required for each guide rail.

### Note!

Only for installation on pallet roller conveyors with RP 178 mm.

<b>Item no.</b>
One unit
<b>Item no.</b>
465140210
Subject to alteration.



### Accessories

- ▶ C-profile for side- and centre guides

# Accessories for pallet roller conveyors

## C-profile for side- and centre guides

To order as complete side supports:

1. State the required number of guide rail support units.

2. State the required guide rail length in mm.

**Item no.**

**Item no.**

1303306000

State length in mm in order. Subject to alteration.



### Accessories

- ▶ Side guides - guide rail support
- ▶ Centre guides - holder

## Pallet end stop

Prevents pallets from over-running the edge of the end of the conveyor.

Universal model for all heights.

**Item no.**

**Width**

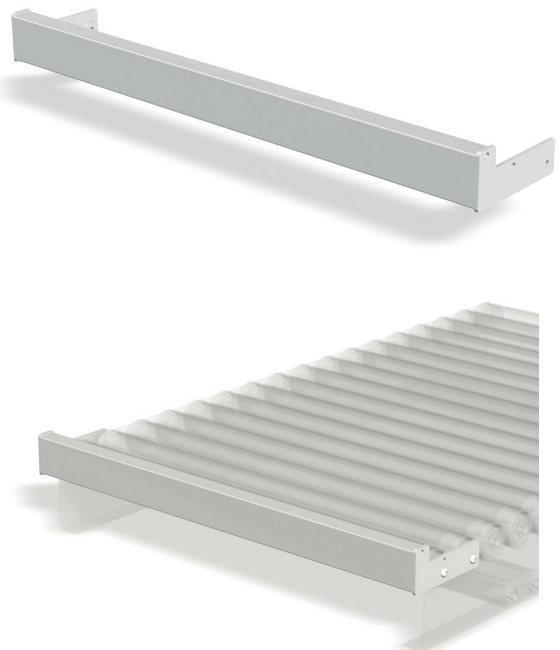
**Item no.**

970 481330970

1170 481331170

1370 481331370

All measurements are in mm. Subject to alteration.



# Accessories for pallet roller conveyors

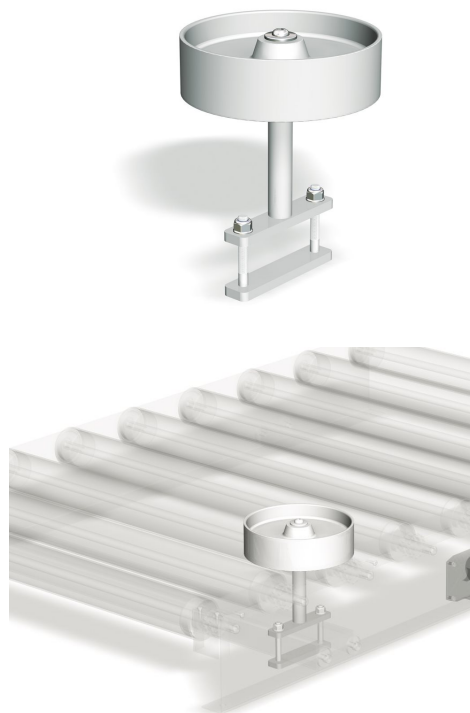
## Guide wheel

Available for RP 178 only.

**Item no.**  
Including support

**Item no.**  
464060000

Subject to alteration.



# Accessories for pallet roller conveyors

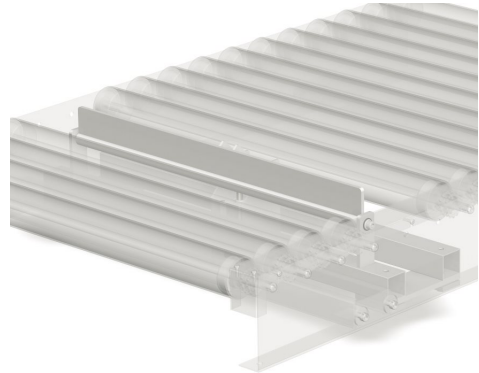
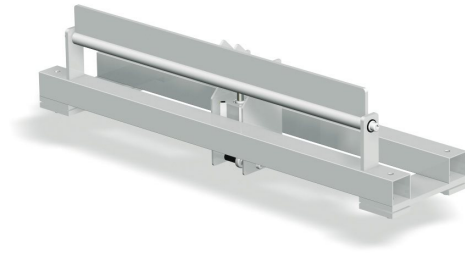
## Pneumatic pallet stop

Recommended for accurate stopping of empty pallets.

The advantage is correct positioning of pallets for palletising.

### Minimum conveyor heights:

190 mm.



### Item no.

One unit complete with fittings

Width	Item no.
970	213930811
1170	213931011
1370	213931211

All measurements in mm. Subject to alteration.

## Brake roller

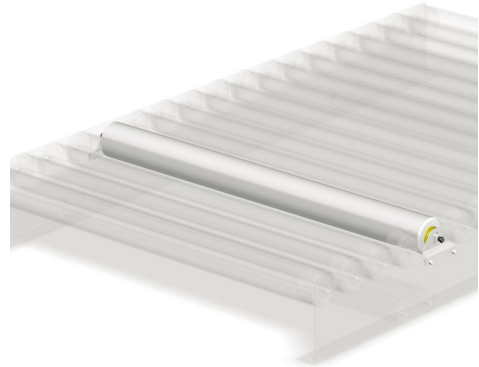
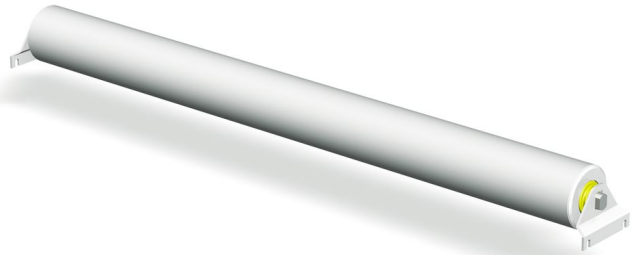
Used for speed reduction on non-driven conveyors.

### Item no.

One unit complete with fittings

Width	Item no.
970	483850970
1170	483851170
1370	483851370

All measurements in mm. Subject to alteration.



# Accessories for pallet roller conveyors

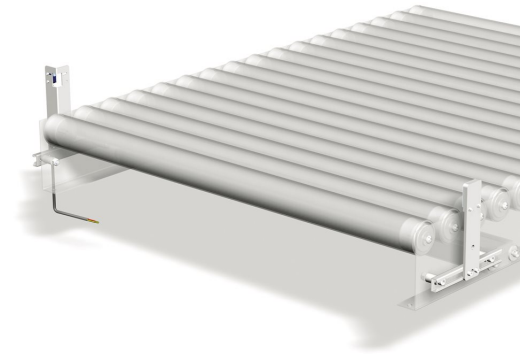
## Photocell fixtures

For mounting of photocells and reflectors on roller conveyors and chain conveyors.

**Item no.**  
One unit complete  
with photocell and fittings

**Item no.**  
318077110

Subject to alteration.



# Accessories for pallet roller conveyors

## Fork-lift guard

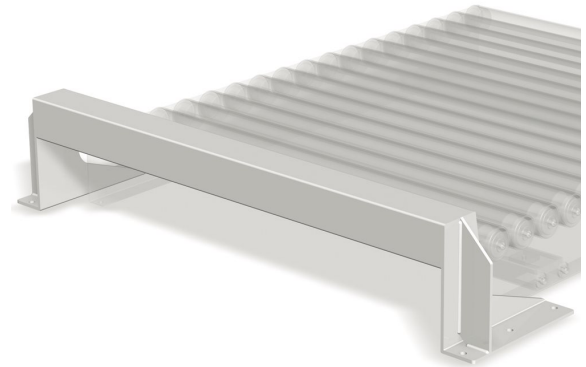
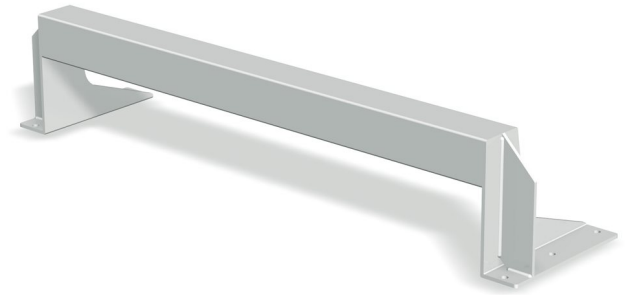
Prevents fork-lift damage to conveyor.

Prevents conveyors from being damaged by fork-lift trucks.

Used in all pallet collection areas.

Recommended truck guard height is 25 mm above roller height.

For mounting on the side or at the end of a conveyor.



### Item no.

Incl. the 25 mm above roller height recommended.

Conveyor width	Height 250 Item no.	Height 350 Item no.	Height 500 Item no.
970	309941250	309941350	309941500
1170	309942250	309942350	309942500
1370	309943250	309943350	309943500

Other heights available on request. All measurements are in mm. Subject to alteration.

# Accessories for pallet roller conveyors

## Fork-lift stop

Prevents a fork-lift from driving into the conveyor.

Item no.	
Width	Item no.
970	322030800
1170	322031000
1370	322031200

All measurements are in mm. Subject to alteration.





# Accessories for pallet roller conveyors

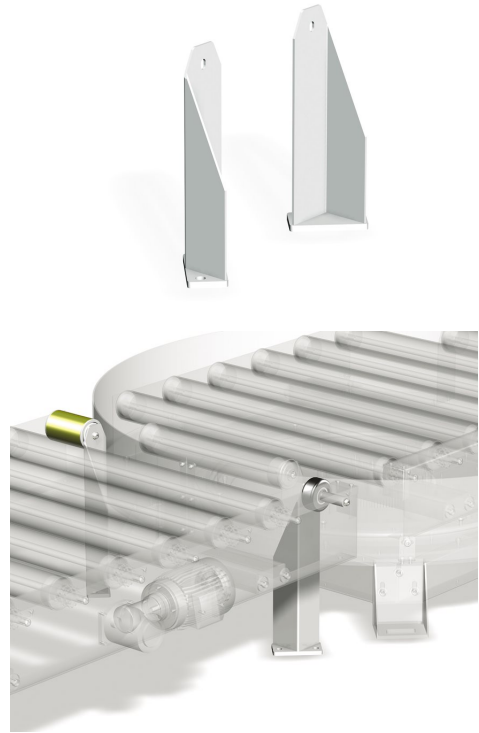
## Support rollers - supports

Used for support in connection with pallet transfer from rotary table or pallet wrapper to pallet roller conveyor.

This type can only be used for RP 178 mm.

The rollers are ordered separately.

One set per conveyor consists of one right and one left unit.



### Item no.

One set (right + left).

Height	Item no.
250	483420250
350	483420350
500	483420500

Other heights available on request. All measurements in mm. Subject to alteration.

## Accessories

- ▶ Support rollers - roller for driven side
- ▶ Support rollers - roller for non-driven side

# Accessories for pallet roller conveyors

## Support rollers - roller for non-driven side

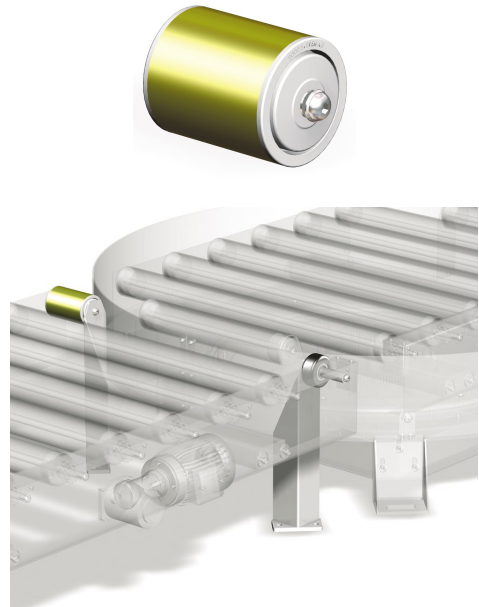
Used for support in connection with pallet transfer from rotary table or pallet wrapper to pallet roller conveyor.

This type can only be used for RP 178 mm.

The supports are ordered separately.

One set per conveyor consists of one right and one left unit.

<b>Item no.</b> Non-driven side.	
<b>Roller width</b>	<b>Item no.</b>
118	306000118
All measurements are in mm. Subject to alteration.	



### Accessories

- ▶ Support rollers - supports
- ▶ Support rollers - roller for driven side

# Accessories for pallet roller conveyors

## Support rollers - roller for driven side

Used for support in connection with pallet transfer from rotary table or pallet wrapper to pallet roller conveyor.

This type can only be used for RP 178 mm.

The supports are ordered separately.

One set per conveyor consists of one right and one left unit.

Item no.	
Driven side.	
Roller width	Item no.
35	482610119
All measurements are in mm. Subject to alteration.	



### Accessories

- ▶ Support rollers - supports
- ▶ Support rollers - roller for non-driven side

## Chain conveyors - simplex chain

Chain conveyors are designed for transport of pallets and other goods with a plane, solid base.

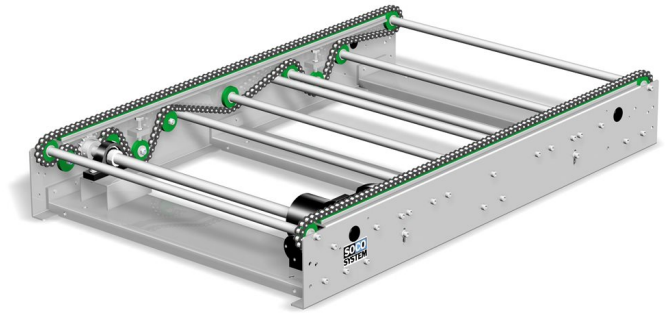
Chain conveyors are suitable for pallet accumulation.

The 750 mm width is designed for 800 mm x 1200 mm pallets travelling with either side leading.

The 950 mm width is designed for 1000 mm x 1200 mm and 1200 x 1200 mm pallets travelling with either side leading.

For heavy-loaded pallets, a conveyor with 3 chains is recommended.

Please inquire for further information.



### Item no.

Height 225 mm excl. supports

Width	Length	Item no.
750	1000	462851145
	1500	462851245
	2000	462851345
	2500	462851545
	3000	462851445
950	1000	462852145
	1500	462852245
	2000	462852345
	2500	
	3000	462852445

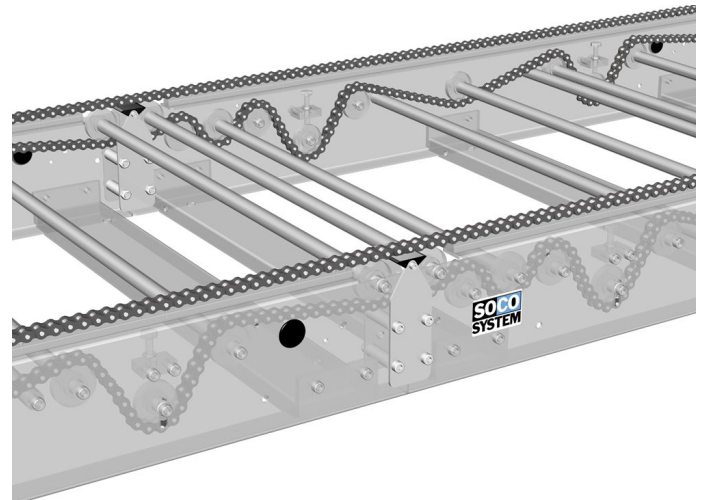
All measurements in mm. Subject to alteration.

## Specifications

Pallet handling	
Payload	For use up to 1,500 kg load per pallet and motor unit. Maximum suitable load is determined by several factors like speed of operation, width of conveyor, and shape and width of the pallets. If in doubt, please contact SOCO SYSTEM.
Standard height	Supports available for standard heights from 225 mm to 650 mm. Other heights available on request.
Chains	3/4" pallet chain with straight side plates.
Chain distance	Approx. 700 mm for 750 mm width. Approx. 900 mm for 950 mm width.
Gear motor	0.55 kW. Worm reduction gear mounted on cross bar between the frames.
Speed	11.8 m/min., 1500 kg with single gear motor. Other speeds available on request.
Subject to alteration.	

## Coupled sections - simplex chain

It is recommended to install supporting blocks between coupled sections.



### Item no.

Height 225 mm excl. supports

Width	Length	Item no.
750	1000	462851100
	1500	462851200
	2000	462851300
	2500	462851500
	3000	462851400
950	1000	462852100
	1500	462852200
	2000	462852300
	2500	462852500
	3000	462852400

All measurements in mm. Subject to alteration.

### Specifications

#### Pallet handling

##### Payload

For use up to 1,500 kg load per pallet and motor unit. Maximum suitable load is determined by several factors like speed of operation, width of conveyor, and shape and width of the pallets. If in doubt, please contact SOCO SYSTEM.

##### Standard height

Supports available for standard heights from 225 mm to 650 mm. Other heights available on request.

##### Chains

3/4" pallet chain with straight side plates.

##### Chain distance

Approx. 700 mm for 750 mm width. Approx. 900 mm for 950 mm width.

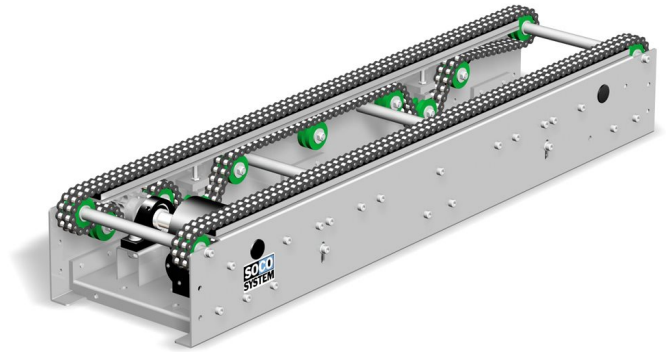
Subject to alteration.

## Driven chain conveyors - duplex chain

Conveyor width 290 mm is designed for 1/2 and 1/4 pallets depending on base configuration.

Item no. Height 225 mm excl. supports		
Width	Length	Item no.
290	1000	485950145
	1500	485950245
	2000	485950345
	2500	485950445
	3000	485950545

All measurements are in mm. Subject to alteration.

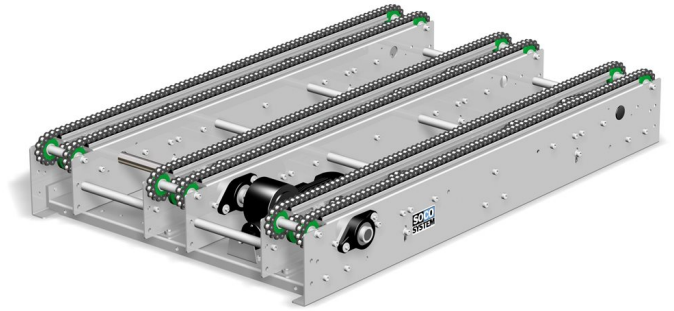


### Specifications

Pallet handling	
Payload	For use up to 1,500 kg load per pallet and motor unit. Maximum suitable load is determined by several factors like speed of operation, width of conveyor, and shape and width of the pallets. If in doubt, please contact SOCO SYSTEM.
Standard height	Supports available for standard heights from 225 mm to 650 mm. Other heights on request.
Chains	3/4" pallet chain with straight side plates.
Chain distance	Approx. 700 mm for 750 mm width. Approx. 900 mm for 950 mm width.
Gear motor	0.55 kW. Worm reduction gear mounted on cross bar between the frames.
Speed	11.4 m/min., 1500 kg with single gear motor. Other speeds available on request.
Subject to alteration.	

## Double-driven chain conveyors - simplex chain

Designed for EUR 1/2 and 1/4 pallets in wood or plastic depending on base configuration.



### Item no.

Height 225 mm excl. supports

Width	Length	Item no.
750	1000	476251145
	1500	476251245
	2000	476251345
	2500	476251445
	3000	476251545

All measurements are in mm. Subject to alteration.

### Specifications

#### Pallet handling

Payload	For use up to 1,500 kg load per pallet and motor unit. Maximum suitable load is determined by several factors like speed of operation, width of conveyor, and shape and width of the pallets. If in doubt, please contact SOCO SYSTEM.
Standard height	Supports available for standard heights from 225 mm to 650 mm. Other heights available on request.
Chains	3/4" pallet chain with straight side plates.
Chain distance	Approx. 700 mm for 750 mm width. Approx. 900 mm for 950 mm width.
Gear motor	0.55 kW. Worm reduction gear mounted on cross bar between the frames.
Speed	11.8 m/min., 1500 kg with single gear motor. Other speeds available on request.

Subject to alteration.

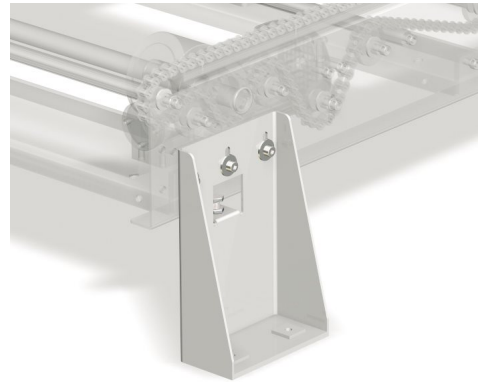
## Various accessories

### Supports for external mounting

Supports for **external** mounting offer high durability and stability and are also recommended for heavy-duty applications.

Item no.	
Height	Item no.
250	442740250
350	442740350
500	442740500

Other heights available on request. All measurements are in mm. Subject to alteration.

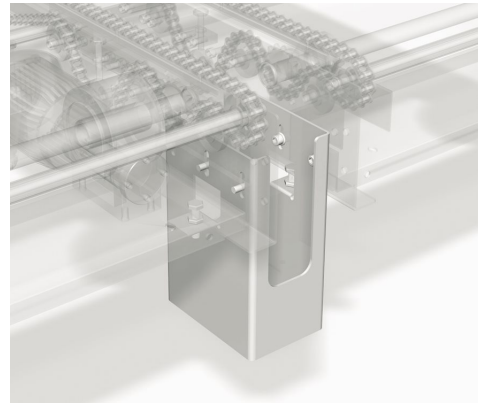
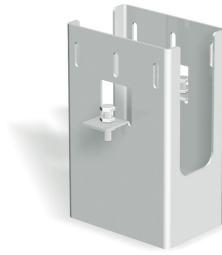




## Supports for internal mounting

Supports for **internal** mounting are recommended where space does not allow external mounting.

Supports for internal mounting are not recommended for heights exceeding 350 mm.



Item no.	
Height	Item no.
250	442742250
350	442742350
500	442742500

Other heights available on request. All measurements are in mm. Subject to alteration.

## Side-guides

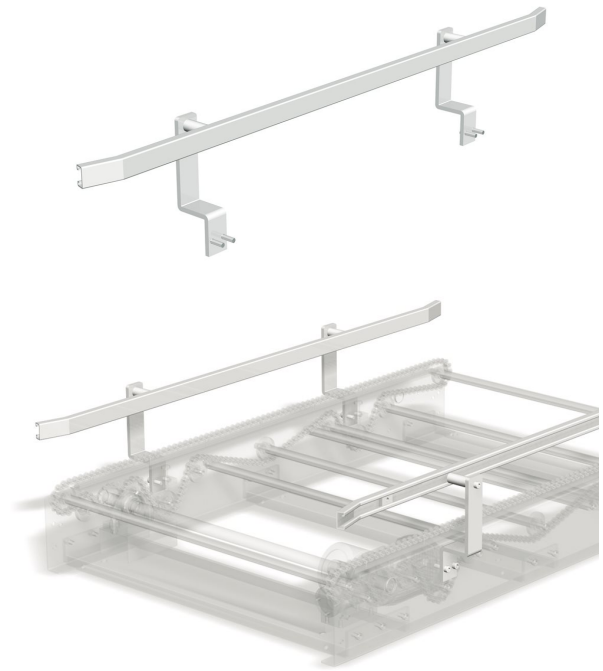
Guides pallet movement.

**Item no.**

Side supports including guide rail for two sides.

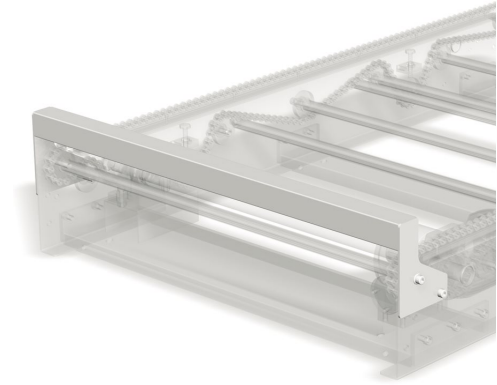
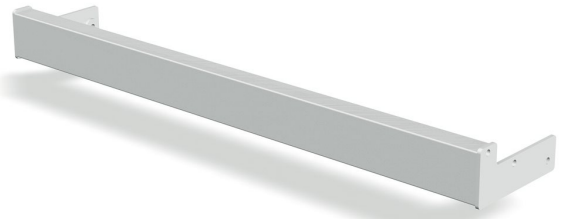
Length	Item no.
1000	486111000
1500	486111500
2000	486112000

All measurements are in mm. Subject to alteration.



## Pallet end stop

Prevents pallets from over running the chain conveyor.



Item no.	
Width	Item no.
290	315970360
750	315970750
950	315970950

All measurements are in mm. Subject to alteration.

## Capacitive sensors

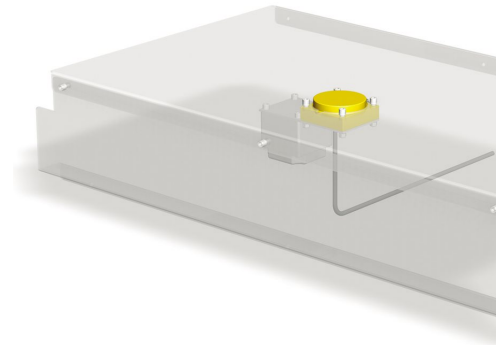
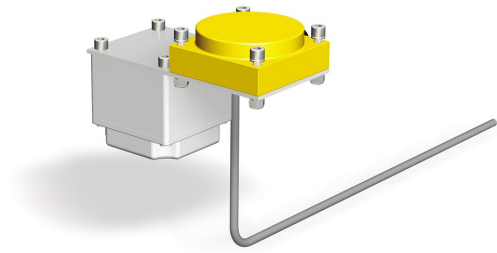
For signalling changes to control system.

Capacitive sensors can replace a photocells, which are exposed to moisture, dirt and impacts.

**Item no.**  
One set.

**Item no.**  
468340000

Subject to alteration.



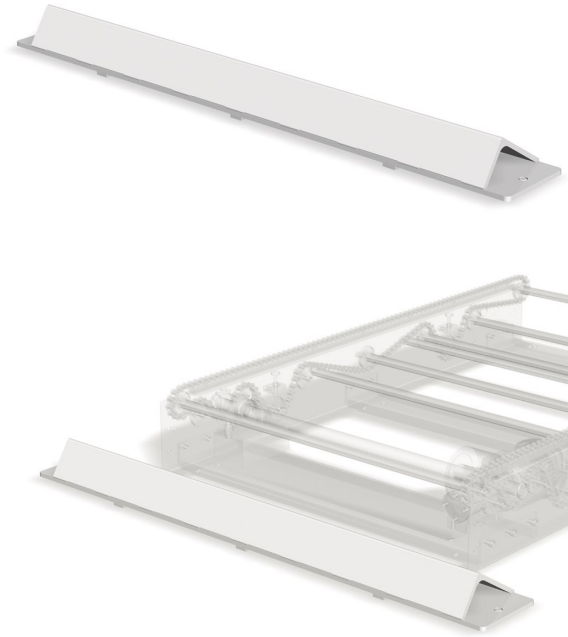
## Fork-lift stop

Prevents fork-lift damage to conveyor.

Can be used in all areas where pallet pick-up is undertaken.

Item no.	
Width	Item no.
290	
750	
950	

All measurements are in mm. Subject to alteration.



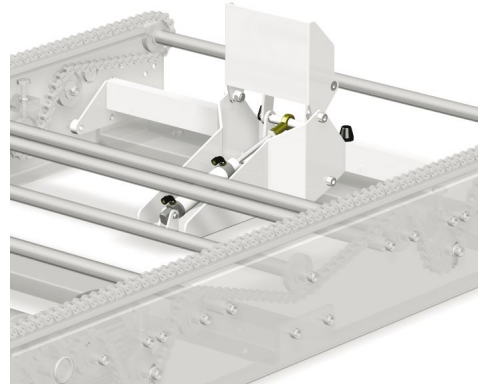
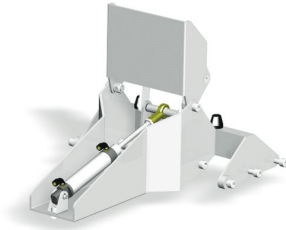
## Pneumatic pallet stop

For all pallet widths.

**Item no.**  
For standard pallets.

**Item no.**  
486023602

Subject to alteration.



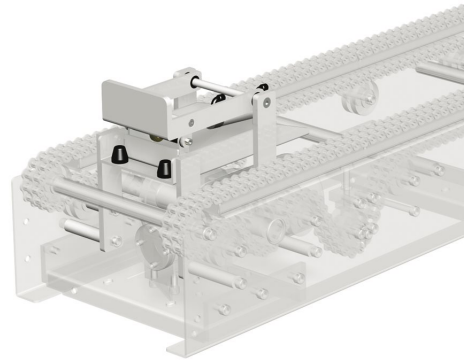
## Pneumatic pallet stop for 1/4 pallets

For 1/4 pallets.

**Item no.**  
For 1/4 pallets

**Item no.**  
484000814

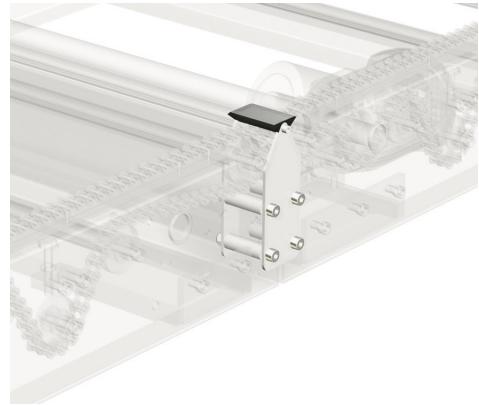
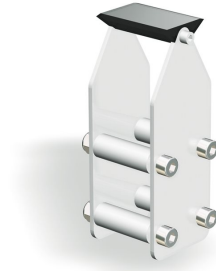
Subject to alteration.



## Supporting block - between conveyors

Fixed between conveyors to support transition of pallets between conveyors.

<b>Item no.</b>
<b>Item no.</b>
474490000
Subject to alteration.





## Supporting block - conveyor end

Fixed on conveyor end to support transition of pallets.

Item no.	Item no.
Right	474490021
Left	474490022
Subject to alteration.	



## Top cover plates

### Top cover plates for motor end - simplex

Prevent dirt from entering between chains and facilitate passing on the conveyor.

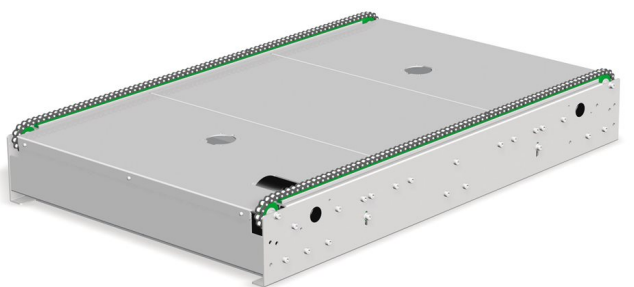
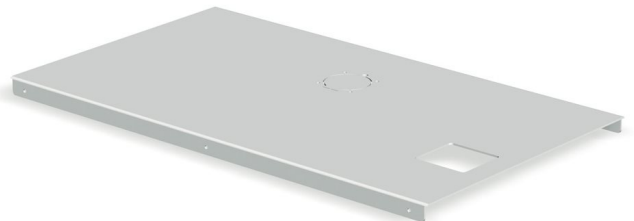
End cover plates are available for all SOCO SYSTEM chain conveyor models.

#### Order example - simplex

Plates for conveyor of 2500 mm length and 750 mm width:

- 1 unit 315780011
- 3 units 315780021
- 2 units 315770020

Item no.	Item no.
Width	Item no.
290	319101011
750	315780010
950	315780011
All measurements are in mm. Subject to alteration.	



## Top cover plates for motor end - duplex

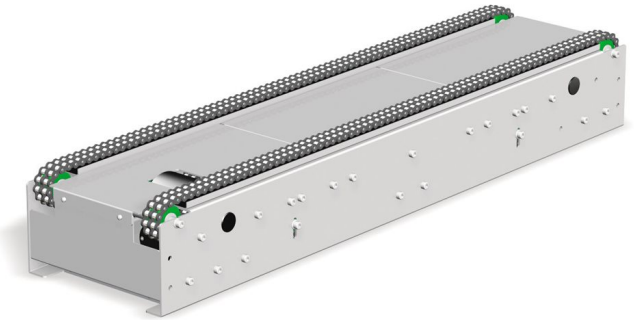
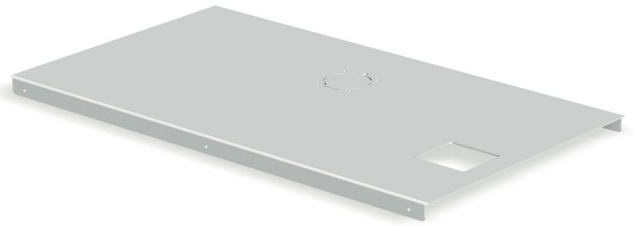
Prevent dirt from entering between chains and facilitate passing on the conveyor.

### Order example duplex

Plates for conveyor of 2500 mm length and 290 mm width:

1 unit 319101010  
4 units 319101020  
2 units 319081010

<b>Item no.</b> Length 500 mm	
<b>Width</b>	<b>Item no.</b>
290	319101010
All measurements are in mm. Subject to alteration.	



## Other top cover plates

Prevent dirt from entering between chains and facilitate passing on the conveyor.

Top cover plates are available for all SOCO SYSTEM chain conveyor models.

**Item no.**

Length 500 mm.

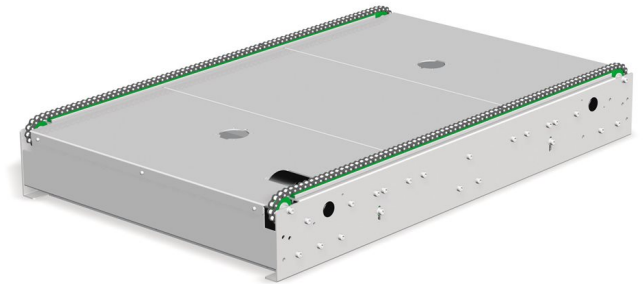
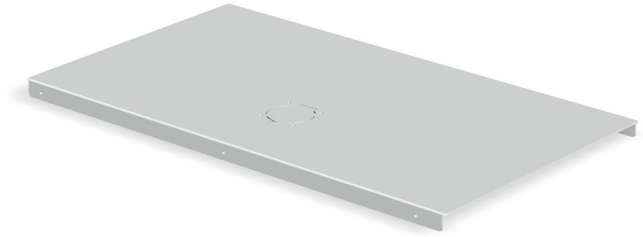
**Width****Item no.**

290 319101020

750 315780020

950 315780021

All measurements are in mm. Subject to alteration.



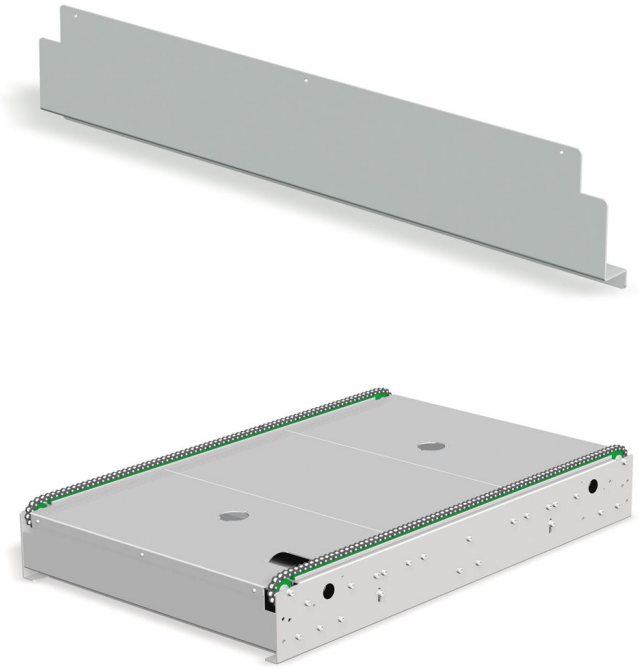
## End cover plates

Prevent dirt from entering between chains and facilitate passing on the conveyor.

End cover plates are available for all SOCO SYSTEM chain conveyor models.

Item no.	
Width	Item no.
290	319081010
750	315770010
950	315770020

All measurements are in mm. Subject to alteration.



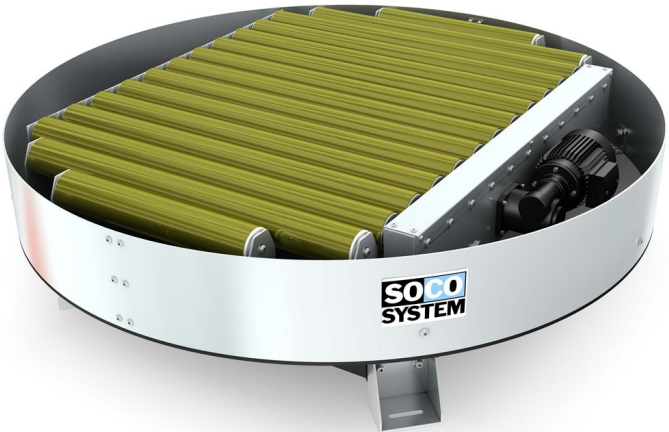
## Rotary tables

The rotary table is used to change the direction of pallet travel.

Fitted with pallet roller conveyor - also available with chain conveyor upon request.

The turntable can rotate  $\pm 90^\circ$  and  $\pm 180^\circ$ .

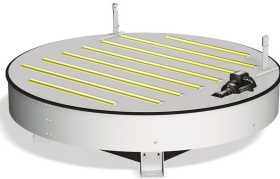
Rotation: 2.8 or 3.75 RPM.



### Specifications

Pallet handling	
Payload	Max. 900 kg. depending on conveyor width.
Standard height	350 mm or 470 mm. Minimum height 310 mm.
Gear motor	0.25 kW.

Subject to alteration.



## Transfer units

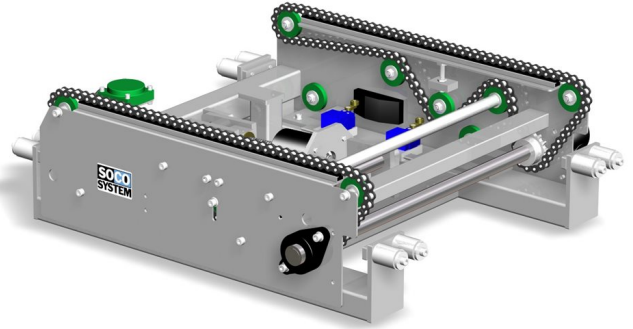
The transfer unit changes the pallet direction travel by 90°.

The 90° transfer unit is a chain conveyor which is raised and lowered automatically above and below roller height.

Can be fitted in all pallet roller conveyors where the height exceeds 350 mm.

### Motors:

Two motors - one for up/down movement and one for chain movement.



### Specifications

Pallet handling	
Payload	Max. 1500 kg per pallet.
Standard width	970 mm, 1170 mm, and 1370 mm.
Standard height	350 mm.
Chains	3/4" pallet chain with straight side plates.
Chain distance	700 mm.
Gear motor	Chain conveyor 0.55 kW. Lifting unit 0.37 kW.
Transfer speed	11.4 m/min. (other speeds available).

Subject to alteration.

### Item no.

Conveyor width	Item no. Motor mounted right side	Item no. Motor mounted left side
970	471221731	471221732
1170	471222731	471222732
1370	471223731	471223732

All measurements are in mm. Subject to alteration.

## Transfer trolleys

Suitable for transport of pallets between two or more conveyor lines.

Several possible applications include delivering empty pallets from a pallet magazine to several pallet loaders and collecting full pallets and transferring these for onward central conveyance.

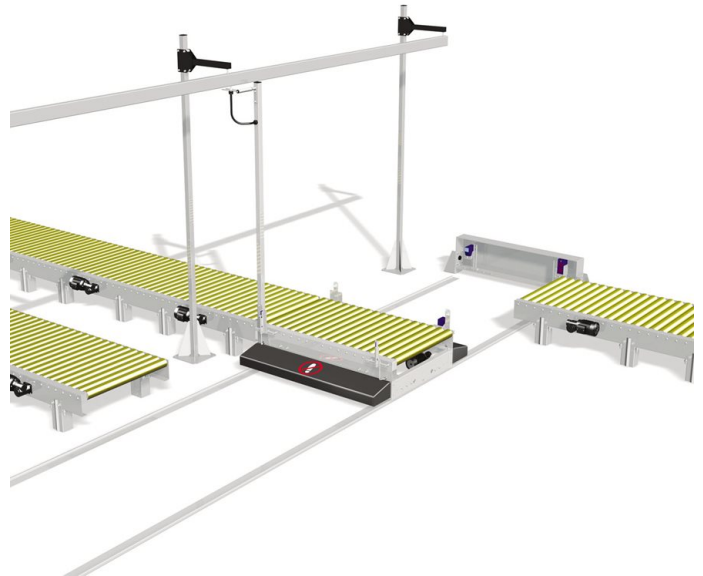
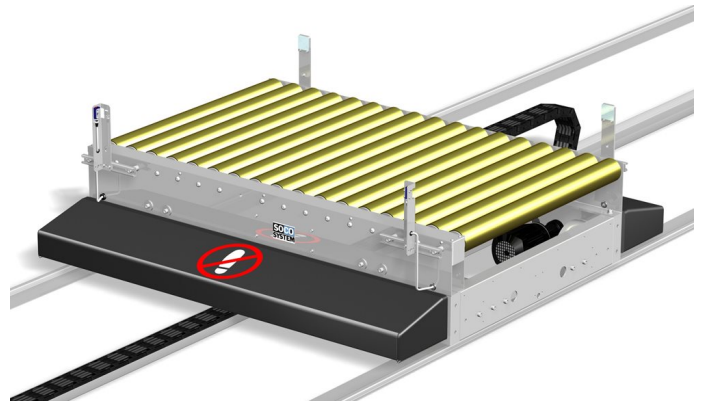
The transfer trolley can be fitted with:

- Driven roller conveyors.
- Chain conveyors.

The standard transfer trolley has safety bumpers. On contact, the transfer trolley stops. The transfer trolley runs on rails fitted into or on the floor.

Together with an order inquiry, please provide the following additional information to SOCO SYSTEM:

- Products to be transferred.
- Pallet sizes and direction of movement.
- Pallet load height.
- Required operating height - minimum and standard is 350 mm.
- Distance of trolley movement.
- Required capacity as number of pallet transfers per hour.
- Preferred method of power supply through "overhead rail" or floor mounted "power chain".
- Preferred type of floor rail - "built-in" or "rails-on-floor".
- Preferred method of personnel protection.



### Specifications

Pallet handling	
Payload	Max. 1500 kg.
Standard width	970 mm, 1170 mm, and 1370 mm.
Standard length	1500 mm.
Gear motor	2 units each of 0.25 kW.
Speed	Standard 10 m/min. Other speeds available on request.
Operating height	With roller conveyor: Minimum 350 mm. With chain conveyor: Minimum 450 mm. Other heights on request.
Subject to alteration.	



Transfer trolley installed in a pallet roller conveyor system supplied to Organon, Ireland.



## Pallet exchangers

The pallet exchanger consists of 2 side modules bolted to the floor.

The pallet fingers on the modules hold the pallet approximately 240 mm above the floor.

No pneumatic air or electricity is required.

Pallet exchangers can be used for all pallet sizes.

### Specifications

**Payload:** Max. 500 kg.

**Capacity:** 15 pallets.

Subject to alteration.

**Item no.**

**Item no.**

477270000

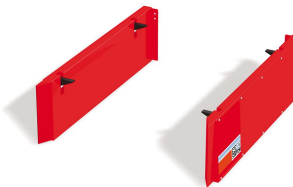
Subject to alteration.



*Quick and easy pallet exchange at the packing station.*



*The pallet exchanger is easily adjusted for the specific pallet size by changing the distance between the two side modules. The modules are then bolted to the floor.*

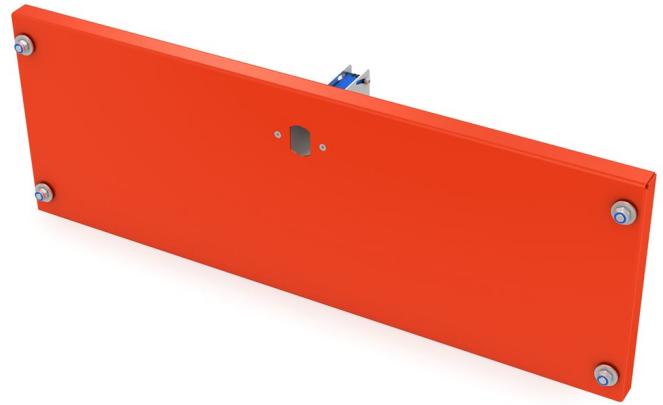


### Accessories

- ▶ Rear plate for pallet changer with photocell

## Rear plate for pallet changer with photocell

Is used when the pallet changer forms part of an automatic system.  
Gives a signal when a pallet is missing.



Item no.	
Model	Item no.
Rear plate for pallet width 800 mm	488650080
Rear plate for pallet width 1000 mm	488650100
Rear plate for pallet width 1200 mm	488650120
Subject to alteration.	

## Pallet magazine PalManager Fixed

The PalManager Fixed is used for stacking of up to 14 pallets or as a pallet magazine from where the operator can collect one pallet at a time.

The pallet magazine can be set for automatic stacking or unstacking.

This model is available in three different widths.

- Safe pallet handling - fewer work-related injuries.
- Increases productivity - always a pallet ready for use.
- Gentle pallet handling.
- No noise or dust inconvenience.
- Provides order both in storage and production.

Item no.	
Model	Item no.
PalManager Fixed 800	496060051
PalManager Fixed 1000	496060052
PalManager Fixed 1200	496060053
Subject to alteration.	



Specifications	PalManager 800	PalManager 1000	PalManager 1200
Pallet size (L x W) mm	1200 x 800.	1200 x 1000.	1200 x 1200.
Max. no. of pallets	14.	14.	14.
Max. lifting capacity in kg.	500.	500.	500.
Dimensions(L x W x H) mm	1380 x 1190 x 2050.	1380 x 1390 x 2050.	1380 x 1590 x 2050.
Power supply	1 x 230 V, 0,2 A.		
Air pressure and consumption	6-10 bar, 28,8 l/cycle.		
Surface treatment	All parts are powder-coated or electro-galvanised. The machine is also available in stainless steel.		
Colours	Red RAL 2002, black RAL 9005 (available in other colours at a surcharge).		
Subject to alteration.			

### Accessories

- ▶ Alarms for level of pallets
- ▶ Spare parts kit for pallet magazines

## Pallet magazine PalManager Multi

Adjustable for different pallet widths.

The PalManager Multi is used for stacking of up to 14 pallets or as pallet magazine from where the operator can collect one pallet at a time.

The pallet magazine can be set for automatic operation.

- Safe pallet handling - fewer work-related injuries.
- Increases productivity - always a pallet ready for use.
- Gentle pallet handling.
- No noise or dust inconvenience.
- Provides order both in storage and production.

All models are available in pneumatic or electric versions



Item no.	
Model	Item no.
PalManager Multi	496060041
PalManager Multi in stainless steel	896060041
PalManager Multi E (electric version)	496050250
Subject to alteration.	

### Specifications

Pallet size (L x W) mm	1200 x 800-1200.
Max. no. of pallets	14.
Max. lifting capacity in kg.	500.
Dimensions(L x W x H) mm	1380 x variable x 1050.
Power supply	1 x 230 V. PalManager Multi E (electric version) 3 x 400 V.
Air pressure and consumption	6-10 bar, 28,8 l/cycle.
Surface treatment	All parts are powder-coated or electro-galvanised. The machine is also available in stainless steel.
Colours	Red RAL 2002, black RAL 9005 (available in other colours at a surcharge).

Subject to alteration.



Photocells monitor the work area of the pallet magazine and send a signal to stop the magazine if a pallet has not been fully stacked/ unstacked or if, for instance, a foot enters the working area.



The pallet magazine series is also available in 18/8 stainless steel.



New user interface.



The pallet magazine can be used as a single module or as an integrated part of a large system.



## Accessories

- ▶ Spare parts kit for pallet magazines
- ▶ Alarms for level of pallets
- ▶ Alternative RAL colour for pallet magazines

Carlsberg Denmark.

## PalManager Multi Long pallet magazine

This model is designed for 2000 mm pallets.

The PalManager Multi Long is used for stacking of up to 14 pallets or as a pallet magazine from where the operator can collect one pallet at a time.

The pallet magazine can be set for automatic stacking or unstacking.

The PalManager Multi Long is adjustable for different pallet widths.

- Safe pallet handling - fewer work-related injuries.
- Increases productivity - always a pallet ready for use.
- Gentle pallet handling.
- No noise or dust inconvenience.
- Provides order both in storage and production.



### Item no.

Model	Item no.
PalManager Multi Long	496060140

Subject to alteration.

### Specifications

Pallet size (L x W) mm	2000 x 800 - 1200.
Max. no. of pallets	14.
Max. lifting capacity in kg.	500.
Dimensions(L x W x H) mm	2180 x variable x 1050.
Power supply	1 x 230 V, 0,2 A.
Air pressure and consumption	6-10 bar, 28,8 l/cycle.
Surface treatment	All parts are powder-coated or electro-galvanised. The machine is also available in stainless steel.
Colours	Red RAL 2002, black RAL 9005 (available in other colours at a surcharge).

Subject to alteration.

## PalManager GM5 pallet magazine

1-5 pallets at a time.

PalManager GM5 is used for stacking of up to 16 pallets or as a pallet magazine from where the operator can collect one or more pallets at a time.

The pallet magazine can be set for automatic stacking or unstacking of 1-5 pallets at a time.

The pallet magazine is electric and does not require any air connection.

### Control system and operation

The PalManager GM5 is equipped with a unique and user-friendly control system that ensures high productivity at lowest possible costs. The pallet magazine is easy to operate and to set for the functions required.

- Safe pallet handling - fewer work-related injuries.
- Increases productivity - always a pallet ready for use.
- Gentle pallet handling.
- No noise or dust inconvenience.
- Provides order both in storage and production.



### Item no.

Model	Item no.
PalManager GM5 800	455190800

Subject to alteration.

### Specifications

Pallet size (L x W) mm	1200 x 800.
Max. no. of pallets	16.
Max. lifting capacity in kg.	600.
Dimensions(L x W x H) mm	1400 x 1200 x 2150.
Power supply	3 x 400 V, 3 A. Other specifications available.
Air pressure and consumption	Not required.
Surface treatment	All parts are powder-coated or electro-galvanised. The machine is also available in stainless steel.
Colours	Red RAL 2002, black RAL 9005 (available in other colours at a surcharge).

Subject to alteration.

### Accessories

- ▶ Spare parts kit for pallet magazines
- ▶ Alarms for level of pallets

## PalManager High pallet magazine

Safe, easy, and noiseless.

The PalManager is used for stacking of up to 24 pallets or as a pallet magazine from where the operator can collect one pallet at a time.

The pallet magazine can be set for automatic stacking or destacking.

- Safe pallet handling - fewer work-related injuries.
- Increases productivity - always a pallet ready for use.
- Gentle pallet handling.
- No noise or dust inconvenience.
- Provides order both in storage and production.

Item no.	
Model	Item no.
PalManager 800	496060081
PalManager 1000	496060082
PalManager 1200	496060083
PalManager 800 in stainless steel	896060081
PalManager 1000 in stainless steel	896060082
PalManager 1200 in stainless steel	896060083
PalManager E 800 (Electric version)	496050581
Subject to alterations.	



Specifications	PalManager 800	PalManager 1000	PalManager 1200	PalManager E 800
Pallet size (L x W) mm	1200 x 800.	1200 x 1000.	1200 x 1200.	1200 x 800.
Max. no. of pallets	24.	24.	20.	24.
Max. lifting capacity in kg.	1000.	1000.	1000.	1000.
Dimensions(L x W x H) mm	1380 x 1190 x 3550.	1380 x 1390 x 3550.	1380 x 1590 x 3550.	1380 x 1190 x 3550.
Power supply	1 x 230V.	1 x 230V.	1 x 230V.	1 x 230 V. 50 Hz
Air pressure and consumption	6-10 bar, 56,1 l/cycle.	6-10 bar, 56,1 l/cycle.	6-10 bar, 56,1 l/cycle.	0
Surface treatment	All parts are powder-coated or electro-galvanised. The machine is also available in stainless steel.			
Colours	Red RAL 2002, black RAL 9005 (available in other colours at a surcharge).			
Subject to alteration.				

### Accessories

- ▶ Spare parts kit for pallet magazines
- ▶ Alarms for level of pallets
- ▶ Alternative RAL colour for pallet magazines



# Accessories for pallet magazines

## Tower module for PalManager

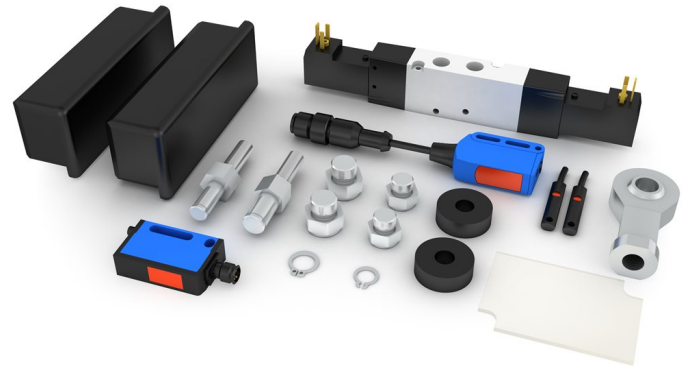
The tower module is used as an extra extension on pallet magazines - available in 3 different widths.



Item no.	
Models	Item no.
Module for PalManager 800 - 14 pallets	221150890
Module for PalManager 1000 - 14 pallets	221151090
Module for PalManager 1200 - 14 pallets	221151290
Module for PalManager 800 - 14 pallets - 18/8 stainless steel	621150890
Module for PalManager 1000 - 14 pallets - 18/8 stainless steel	621151090
Module for PalManager 1200 - 14 pallets - 18/8 stainless steel	621151290
Subject to alteration.	

## Spare parts kit for pallet magazines

The spare parts kit contains the most vital wear-and-tear parts so as to avoid long production down-time.



Item no.	
Model	Item no.
Spare parts kit for PalManager	328680040
Subject to alteration.	

## Alternative RAL colour for pallet magazines

Standard pallet magazines are powder coated in RAL colours RAL 2002 and RAL 9005.

The pallet magazines are available in other RAL colours at an additional cost.



Item no.	
Model	Item no.
Alternative RAL colour for PalManager Multi	0000511031
Alternative RAL colour for PalManager Fixed, GM5 and High	0000511036
Subject to alteration.	

## Alarms for level of pallets

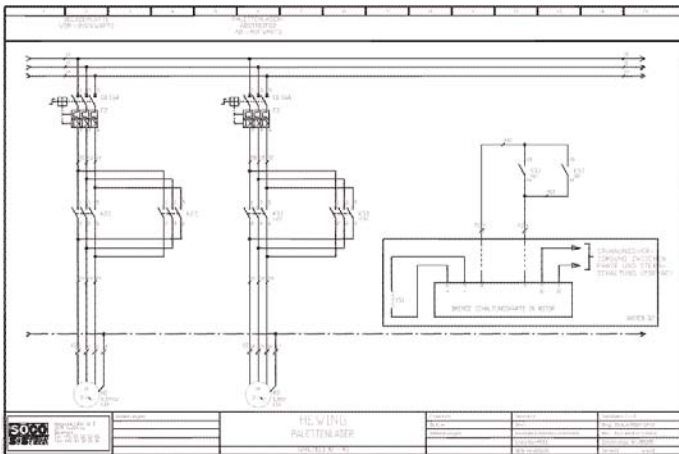
Photocell kit for release of alarm when reaching the highest or lowest number of pallets in the pallet magazine.

Alarm for minimum number of pallets is used when the pallet magazine forms part of an automatic system.

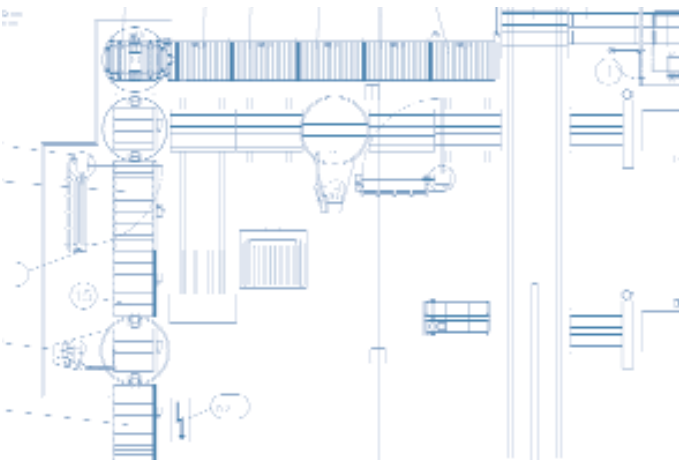
Item no.	
<b>Models</b>	<b>Item no.</b>
Alarm for minimum number of pallets	329440000
Alarm for maximum number of pallets	329420000
Alarm for maximum number of pallets for PalManager GM5	330990015
Subject to alteration.	



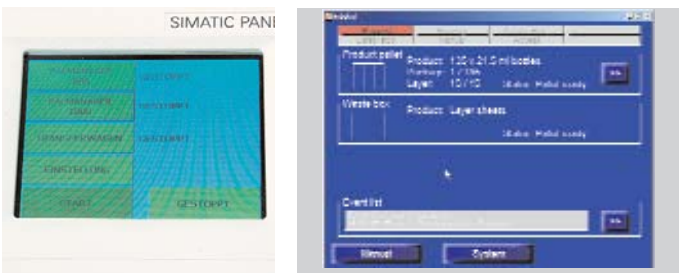
# Control systems



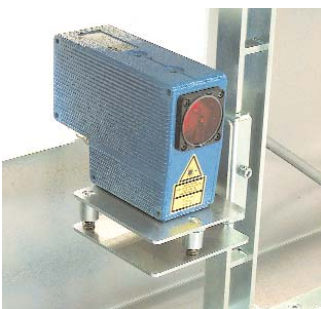
Clear electrical diagrams detail the programme setup.



Full system layout is provided with each installation.



Customised control panels with touch screen features for easy man/machine interaction.



Photocell monitoring.



Well organised control cabinets with space for expansion.

## Control systems

SOCO SYSTEM supplies customised control systems for end-of-line packing and handling systems.

Our control systems are based on PLC programme platforms such as Siemens, Omron, Allen – Bradley. Customer specifications and customer choice of control systems and electrical components can be met.

## Palletising equipment

Systems including palletising robots are supplied as standard with an IPC equipped with a Soft-PLC. This supports in full the IEC 1131 standard.

Overall operating system platform and man/machine interface is Windows based.

The IPC controlling the palletising robot can also control virtually all peripheral equipment. Production data can be provided for overall control systems. Programmes can be changed through modem access, and error messages can be sent by e-mail or SMS.

## Operator interface

SOCO SYSTEM's user interfaces are designed to facilitate the operation of the system, with well-defined error messages to ensure simple trouble-shooting procedures.

It can be designed for different levels of access to ensure maximum machine security and personnel safety.

Operator interface systems are a very important feature in the smooth operation of integrated end-of-line systems. SOCO SYSTEM has proven experience in developing efficient operator interfaces.

Contact our project department for further information

## Safety guidelines

SOCO SYSTEM modules are manufactured to meet CE requirements and specifications.

Each module is secured individually in the best possible way. Combinations of modules, however, may require further safety and security measures to prevent accidents and to increase personnel safety.

SOCO SYSTEM offers an individual safety and personnel security evaluation as well as recommend solution. Such solutions can include fencing, light curtains, automatic gates, safety curtains, and doors operated and controlled automatically. This ensures that the complete installation meets the requirements in the EEC directives.

The solutions offered are tailor-made to meet your specific requirements and to suit your premises.

SOCO SYSTEM integrates the most recent industrial security systems from reputable European suppliers.

SOCO SYSTEM equipment meets the following EC directives:

73/23 EEC – 89/336 EEC  
– 98/37 EC

and thereby also the following harmonised standards:

EN 291-X – EN 418 – EN 954  
– EN 959 – EN 999 – EN 1050 –  
EN 60204-1.



Customised fencing for pallet conveyor line with integrated fully automatic pallet stretch wrapper.



Automatic light curtain protection preventing entry to the danger zone but allowing exit of a full pallet.

<b>A</b>	
Alarms for level of pallets	56
Alternative RAL colour for pallet magazines	55
<b>B</b>	
Brake roller	19
<b>C</b>	
Capacitive sensors	34
Centre guides - holder	15
Chain conveyors - simplex chain	26
Coupled sections - simplex chain	27
Coupled sections for driven pallet conveyors	2
Coupled sections for driven pallet roller conveyors	9
C-profile for side- and centre guides	16
Cross bars for supports	13
<b>D</b>	
Double-driven chain conveyors - simplex chain	29
Driven 2-part pallet roller conveyors	4
Driven chain conveyors - duplex chain	28
Driven pallet roller conveyors	1
Driven pallet roller conveyors with sub-mounted gear motor	8
Driven pallet roller conveyors with-sidemounted gear motor	6
<b>E</b>	
End cover plates	42
<b>F</b>	
Fork-lift guard	21
Fork-lift stop	22
Fork-lift stop	35
<b>G</b>	
Guide wheel	17
<b>N</b>	
Non-driven 2-part pallet roller conveyors	5
Non-driven pallet roller conveyors	3
Non-driven pallet roller conveyors	11
<b>O</b>	
Other top cover plates	41
<b>P</b>	
Pallet end stop	16
Pallet end stop	33
Pallet exchangers	47
Pallet magazine PalManager Fixed	49
Pallet magazine PalManager Multi	50
PalManager GM5 pallet magazine	53
PalManager High pallet magazine	54
PalManager Multi Long pallet magazine	52
Photocell fixtures	20
Pneumatic pallet stop	18
Pneumatic pallet stop	36
Pneumatic pallet stop for 1/4 pallets	37
<b>R</b>	
Rear plate for pallet changer with photocell	48
Rotary tables	43
<b>S</b>	
Side guides - guide rail support	14
Side-guides	32
Spare parts kit for pallet magazines	55
Support rollers - roller for driven side	25
Support rollers - roller for non-driven side	24
Support rollers - supports	23
Supporting block - between conveyors	38
Supporting block - conveyor end	39
Supports for external mounting	12
Supports for external mounting	30
Supports for internal mounting	13
Supports for internal mounting	31
<b>T</b>	
Top cover plates for motor end - duplex	40
Top cover plates for motor end - simplex	39
Tower module for PalManager	55
Transfer trolleys	45
Transfer units	44



# The SOCO SYSTEM

## From case erecting to pallet securing

The SOCO SYSTEM product range handles cases, plastic crates, trays, pallets, and many of your products.

The SOCO SYSTEM product range is designed to increase efficiency and eliminate physically strenuous work functions.

### One system – one supplier

There are many advantages of full product compatibility; less paperwork and no time wasted in adapting products from different suppliers.

### Meet your future requirements

Add modules and functionality, relocate modules, or whatever fits your future needs.

Call us, mail us, or visit us at [www.socosystem.com](http://www.socosystem.com)

Your local SOCO SYSTEM dealer:

COPYRIGHT SOCO SYSTEM 2014

**Head office:**  
**SOCO SYSTEM A/S**  
 Helgeshoej Allé 16D  
 DK-2630 Taastrup  
 Denmark  
 Tel +45 43 52 55 66  
 Fax +45 43 52 81 16  
 info@socosystem.com  
 www.socosystem.com



Flextronics, Netherlands



Sig. Ágústsson, Iceland



Laru, Germany



Toms, Denmark



Rioja, Spain



Bouché Père & Fils, France



United Milk, England



Altmark Käserei, Germany